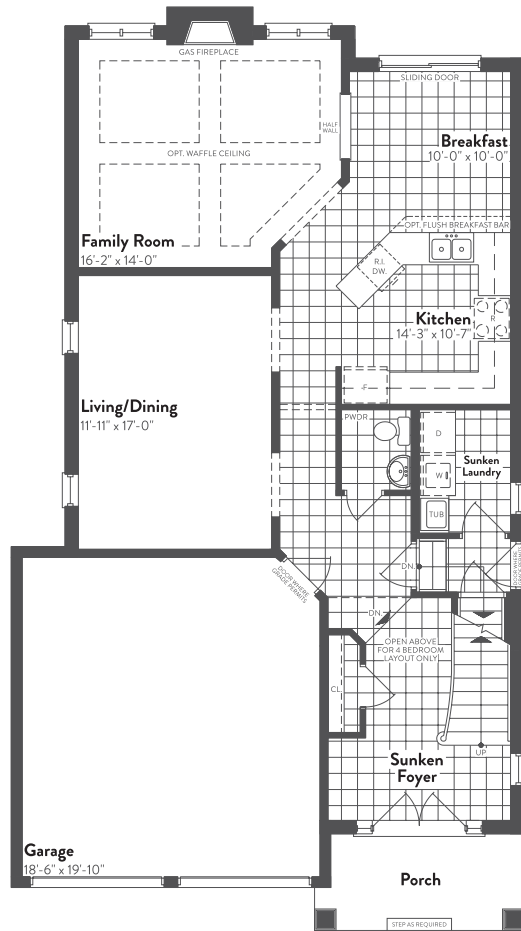
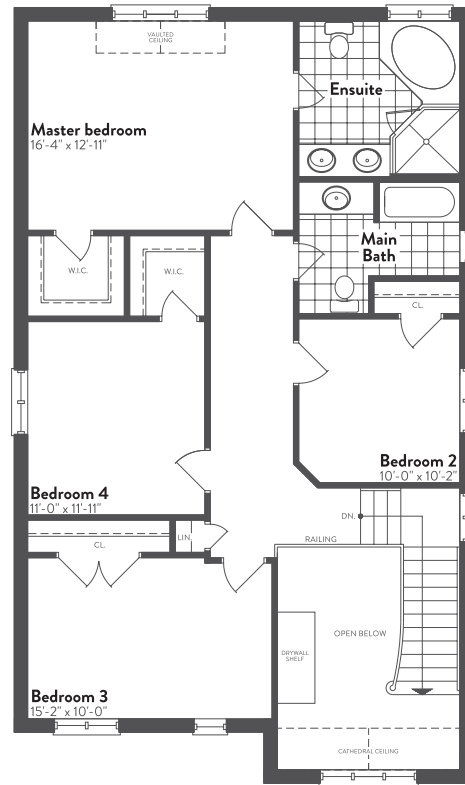


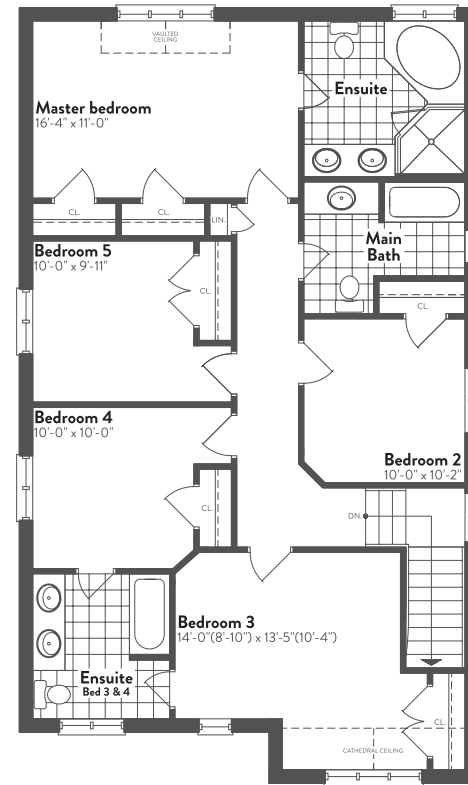
**BASEMENT
ELEVATION A/B/C**
2355/2362/2372/2471/2478/2488 sf



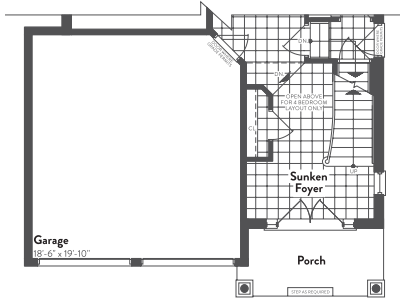
**FIRST FLOOR
ELEVATION A/B**
2355/2362/2471/2478 sf



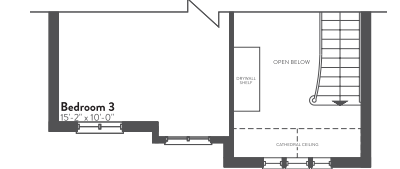
**SECOND FLOOR (4 BEDROOM)
ELEVATION A**
2355 sf



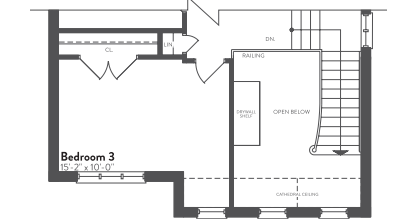
**SECOND FLOOR (5 BEDROOM)
ELEVATION A**
2471 sf



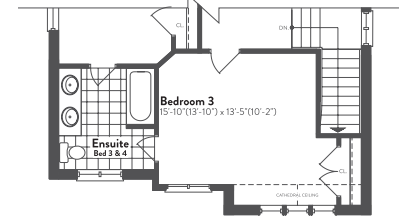
**FIRST FLOOR
ELEVATION C**
2372/2468 sf



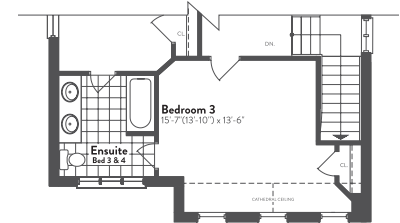
**SECOND FLOOR (4 BEDROOM)
ELEVATION B**
2362 sf



**SECOND FLOOR (4 BEDROOM)
ELEVATION C**
2372 sf



**SECOND FLOOR (5 BEDROOM)
ELEVATION B**
2478 sf



**SECOND FLOOR (5 BEDROOM)
ELEVATION C**
2488 sf

The Houston (9')

OPTIONAL FINISH BASEMENT

