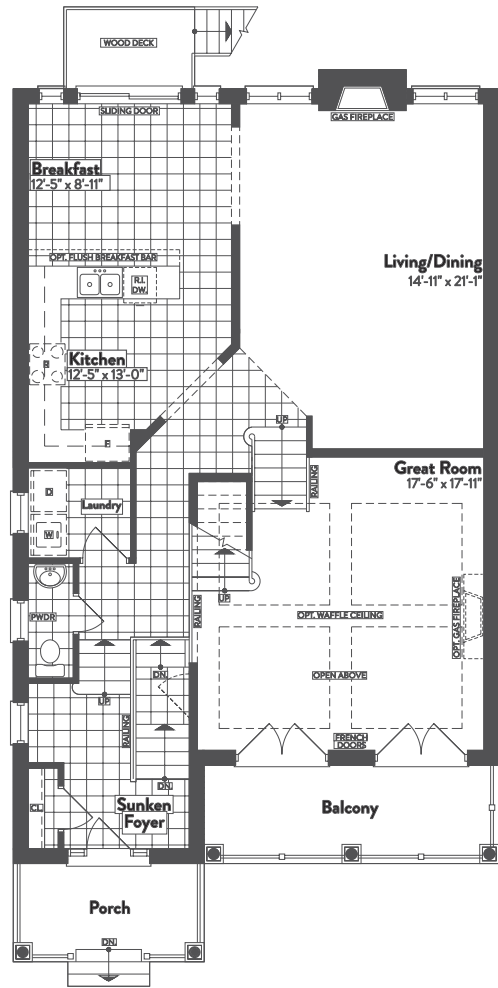
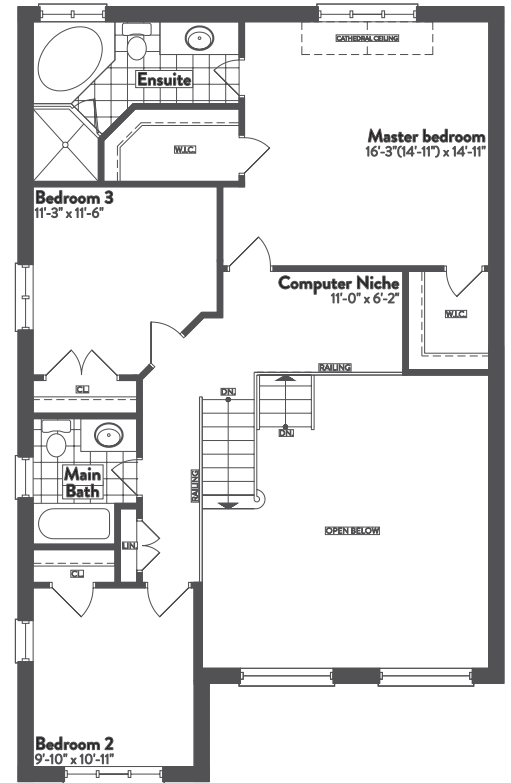


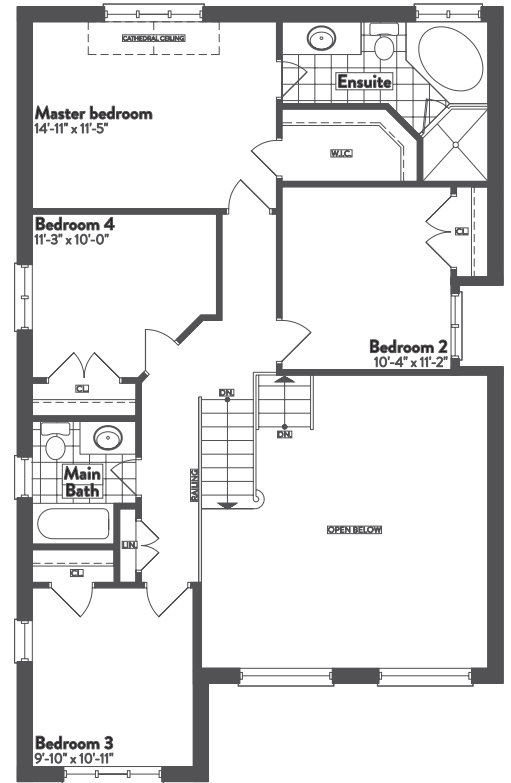
**BASEMENT
ELEVATION A/B/C**
2302/2316 sq ft 4 BEDROOM 2288/2302 sq ft



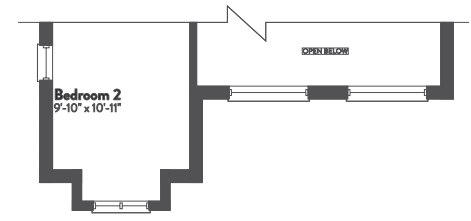
**FIRST FLOOR
ELEVATION A/B/C**
2302/2316 sq ft 4 BEDROOM 2288/2302 sq ft



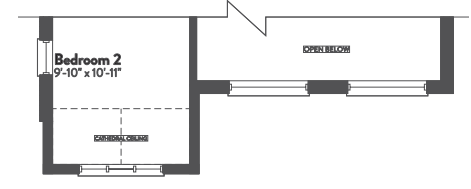
**SECOND FLOOR (3 BEDROOM)
ELEVATION A**
2302 sq ft



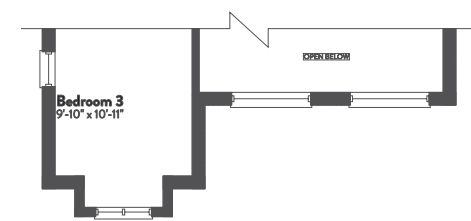
**SECOND FLOOR (4 BEDROOM)
ELEVATION A**
2288 sq ft



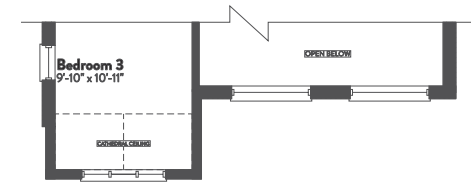
**SECOND FLOOR (3 BEDROOM)
ELEVATION B**
2316 sq ft



**SECOND FLOOR (3 BEDROOM)
ELEVATION C**
2302 sq ft



**SECOND FLOOR (4 BEDROOM)
ELEVATION B**
2302 sq ft



**SECOND FLOOR (4 BEDROOM)
ELEVATION C**
2288 sq ft



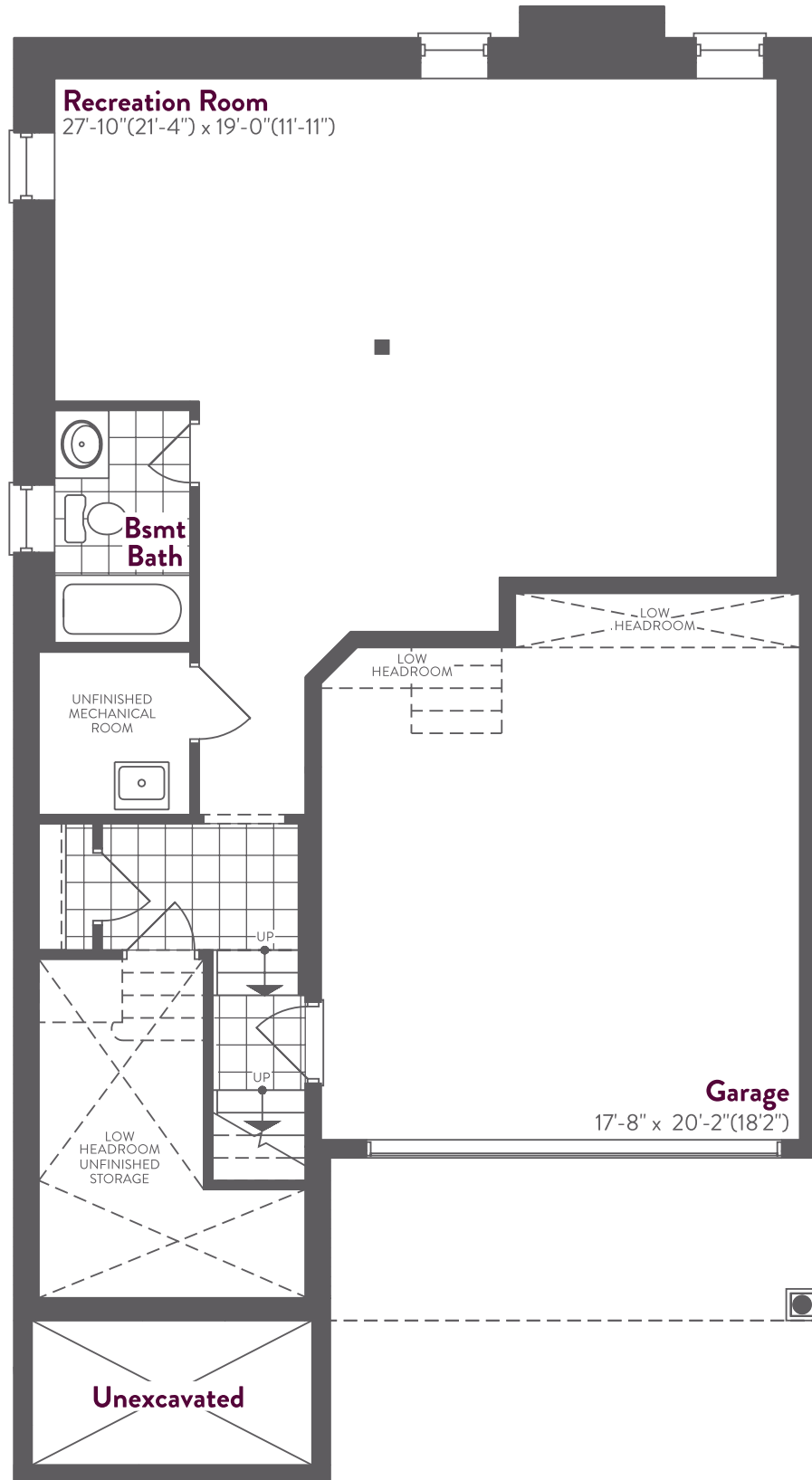
The Hurstland 2302/2316 (4 Bedroom 2288/2302) sq.ft. (9')

THE FLOOR PLANS, ELEVATIONS, DIMENSIONS, SPECIFICATIONS AND ARCHITECTURAL DETAILING SHOWN ARE PRE-CONSTRUCTION PLANS ONLY AND MAY BE CHANGED OR REVISED WITHOUT NOTICE INCLUDING AS MAY BE NECESSITATED BY ARCHITECTURAL CONTROLS AND THE CONSTRUCTION PROCESS. ALL DIMENSIONS ARE APPROXIMATE. ACTUAL USABLE FLOOR SPACE MAY VARY FROM THE STATED AREA. HOUSE MAY BE REVERSED. STEPS MAY VARY AT ANY EXTERIOR ENTRANCE. ILLUSTRATIONS ARE ARTIST'S CONCEPT ONLY. EXTERIOR RAILINGS TO BE INSTALLED ONLY AS REQUIRED BY GRADE NOTWITHSTANDING ANY ILLUSTRATIONS OR PLANS. E.&O.E. MAR 2 2020



The Hurstland (9')

OPTIONAL FINISH BASEMENT



**BASEMENT
ELEVATION A/B/C**