

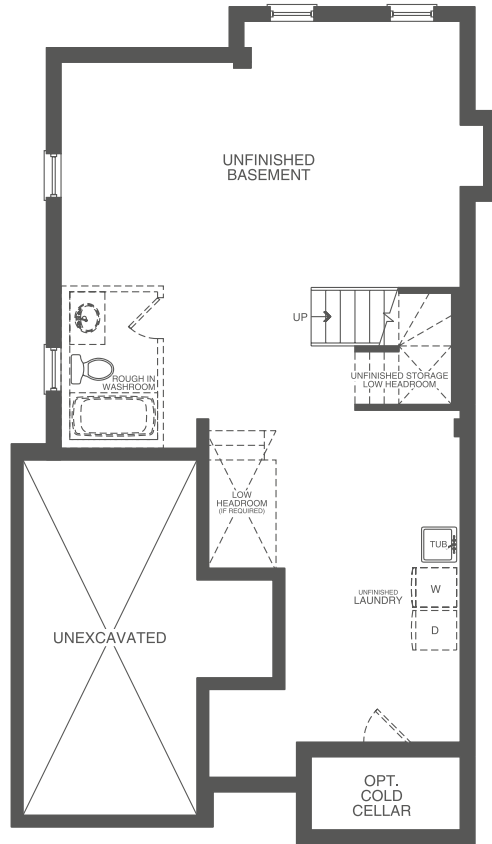


Elevation A 1,870 sq.ft.

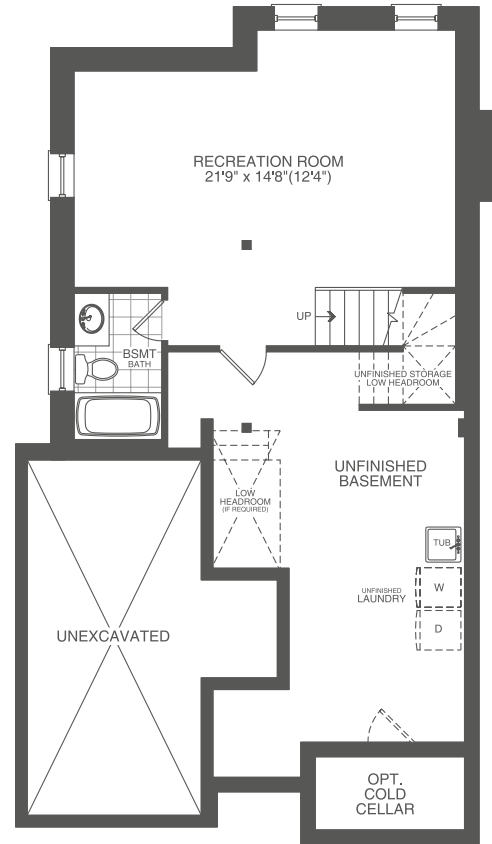


Elevation C 1,870 sq.ft.

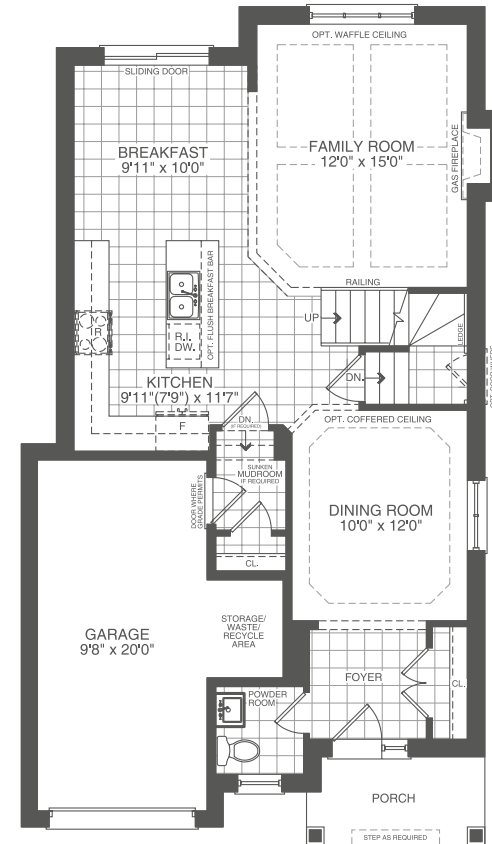




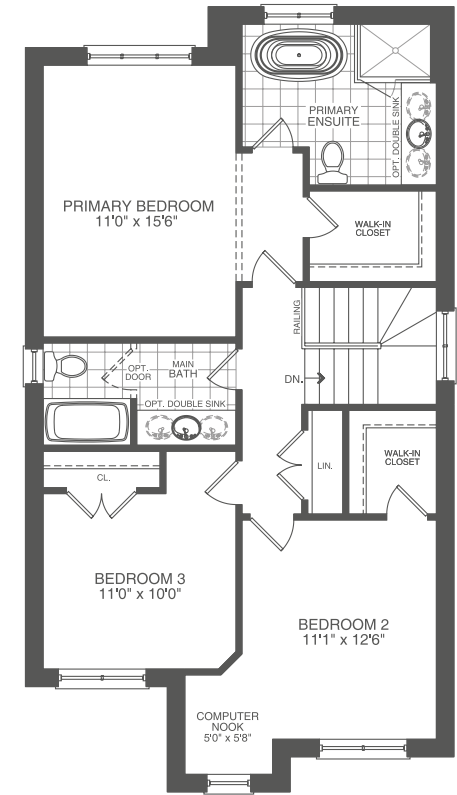
UNFINISHED BASEMENT  
ELEV. A/C  
1870 sf



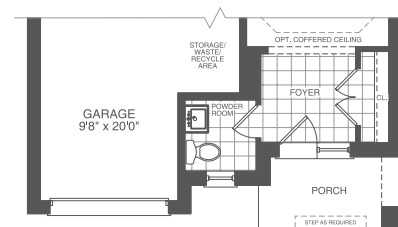
FINISHED BASEMENT  
ELEV. A/C  
2340 sf



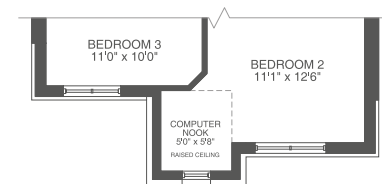
GROUND FLOOR  
ELEV. A  
1870 sf



SECOND FLOOR  
ELEV. A  
1870 sf



GROUND FLOOR  
ELEV. C  
1870 sf



SECOND FLOOR  
ELEV. C  
1870 sf





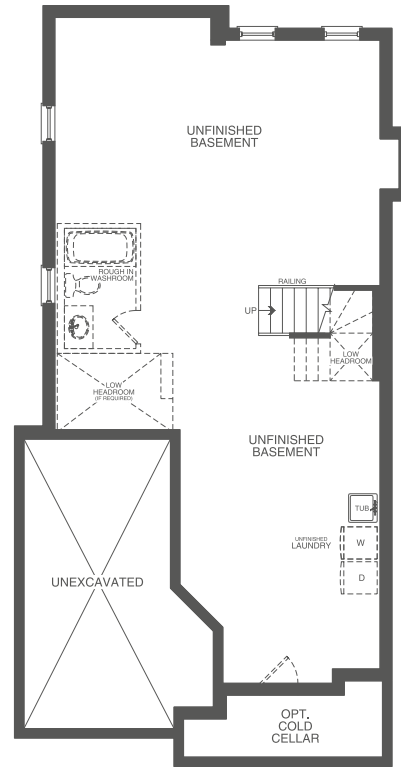


Elevation A 2,080 sq.ft.

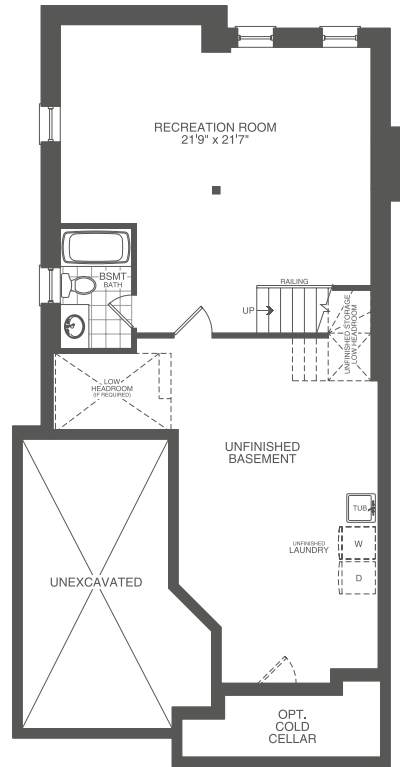


Elevation C 2,075 sq.ft.

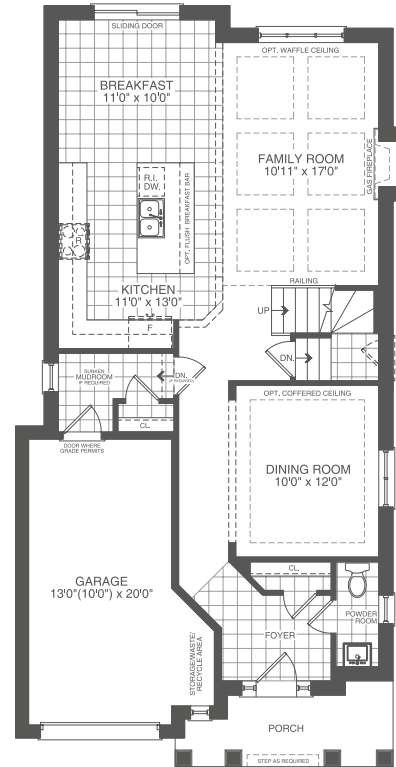




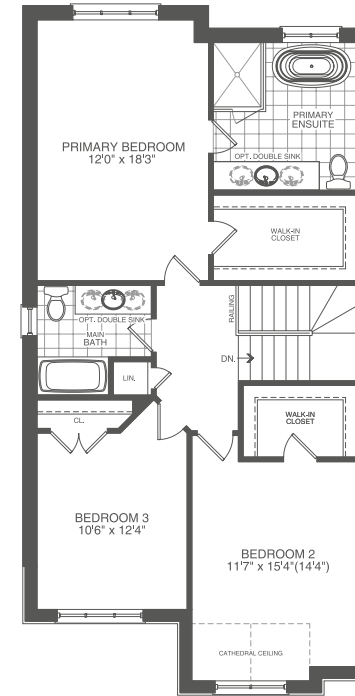
UNFINISHED BASEMENT  
ELEV. A  
2080 sf



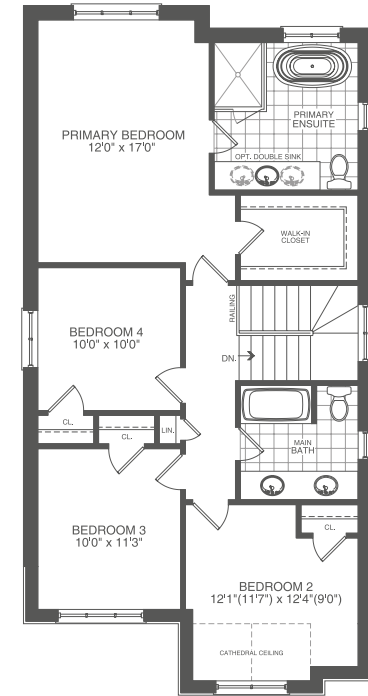
FINISHED BASEMENT  
ELEV. A  
2610 sf



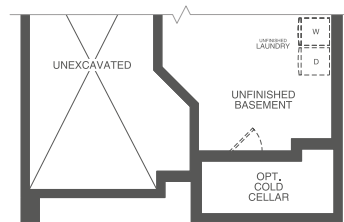
GROUND FLOOR  
ELEV. A  
2080 sf



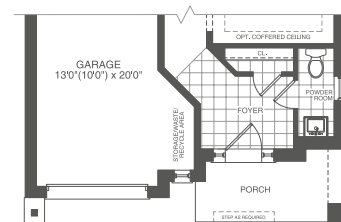
SECOND FLOOR  
3 BEDROOM  
ELEV. A  
2080 sf



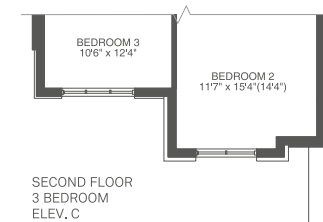
ALT. SECOND FLOOR  
4 BEDROOM  
ELEV. A  
2080 sf



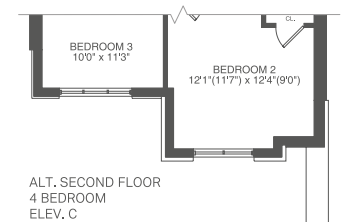
UNFINISHED BASEMENT/  
FINISHED BASEMENT  
ELEV. C  
2075/2605 sf



GROUND FLOOR  
ELEV. C  
2075 sf



SECOND FLOOR  
3 BEDROOM  
ELEV. C  
2075 sf



ALT. SECOND FLOOR  
4 BEDROOM  
ELEV. C  
2075 sf





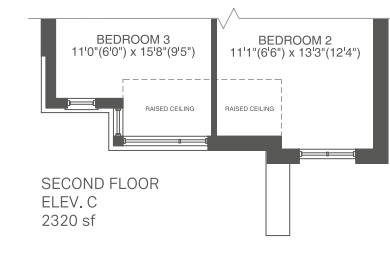
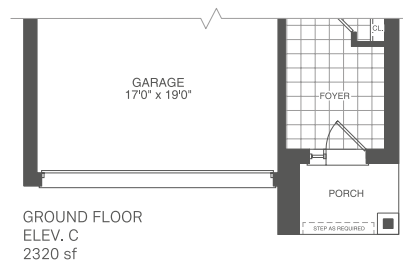
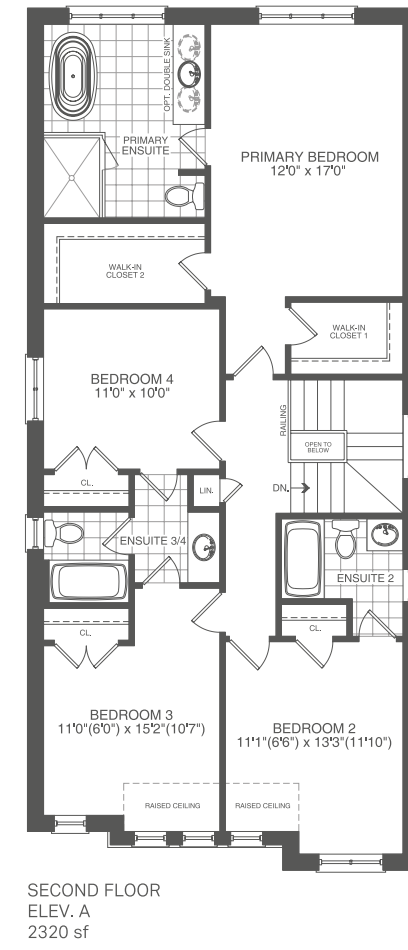
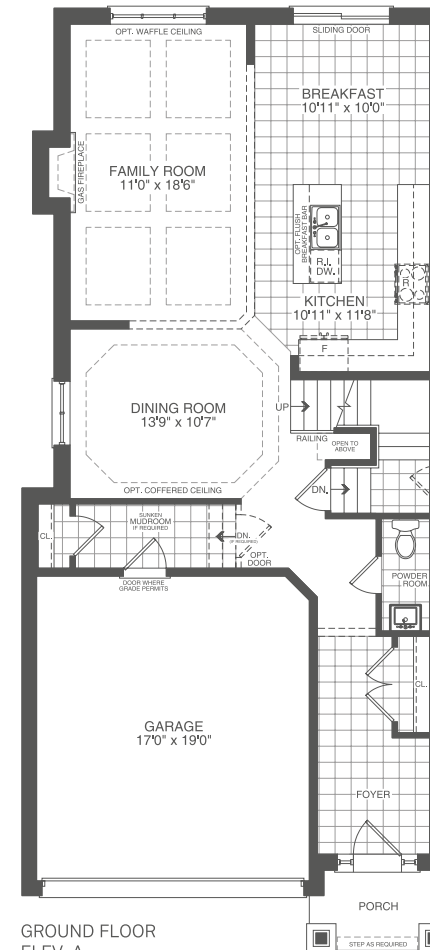
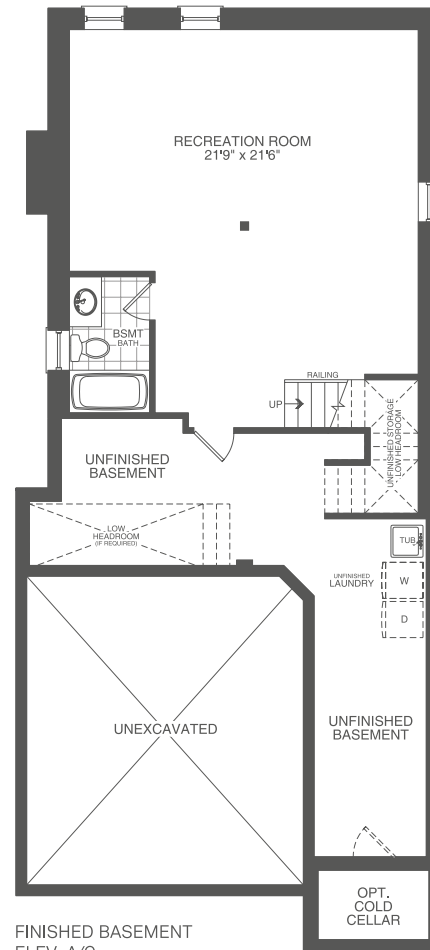
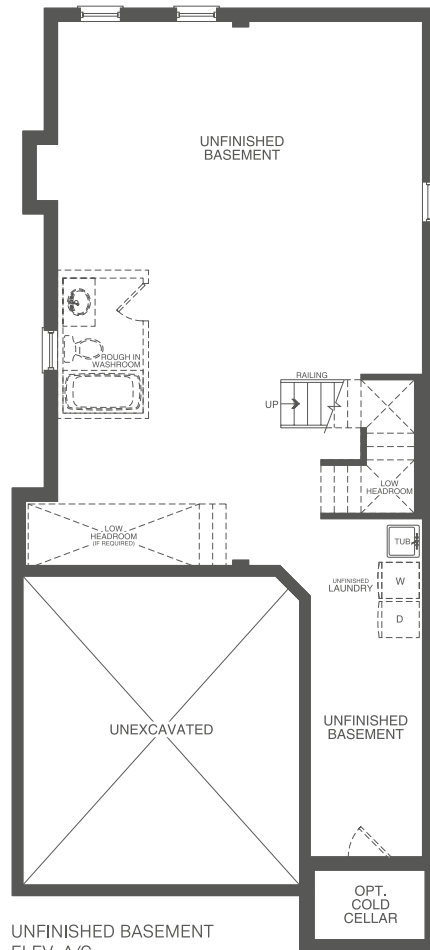


Elevation A 2,320 sq.ft.



Elevation C 2,320 sq.ft.





The floor plans, elevations, dimensions, specifications and architectural detailing shown are pre-construction plans only and may be changed or revised without notice including As may be necessitated by architectural controls and the construction process. All dimensions are approximate. Actual usable floor space may vary from the stated area. House may be reversed. Steps may vary at any exterior entrance. Illustrations are artist's concept only. Exterior railings to be installed only as required by grade notwithstanding any illustrations or plans. E & O.E. NOV 15 2023





Elevation A 2,350 sq.ft.



Elevation C 2,360 sq.ft.









Elevation A 2,720 sq.ft.

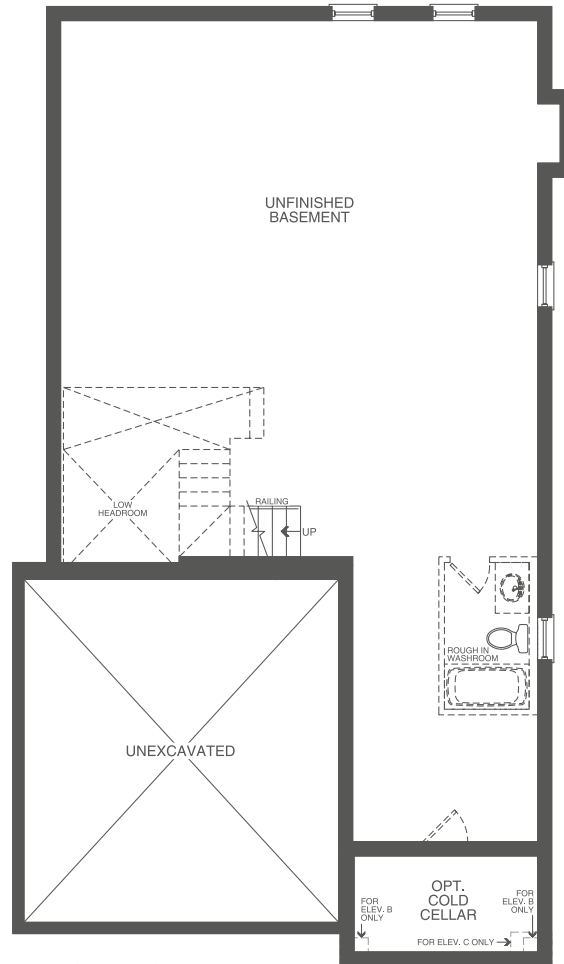


Elevation B 2,720 sq.ft.

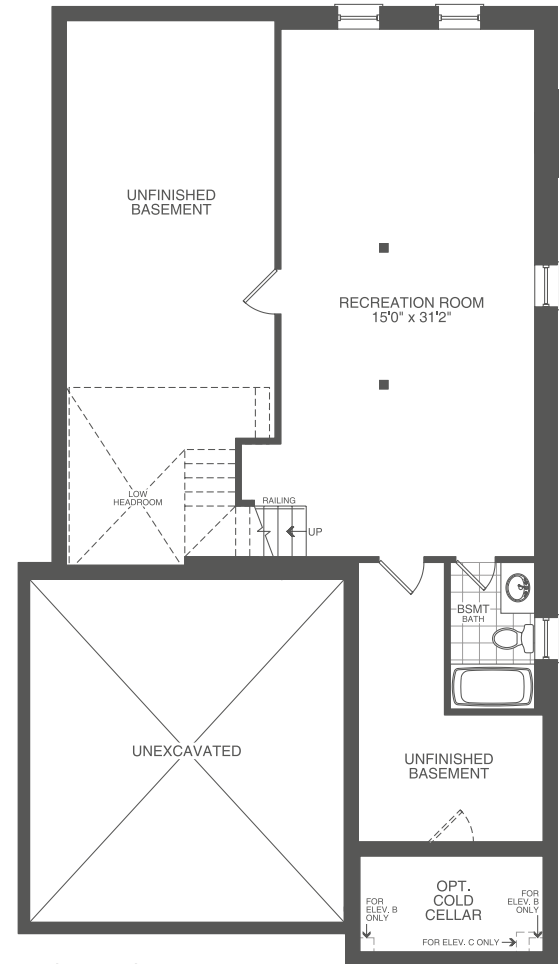


Elevation C 2,725 sq.ft.





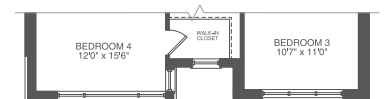
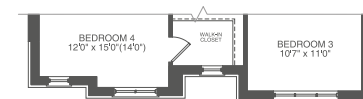
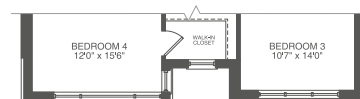
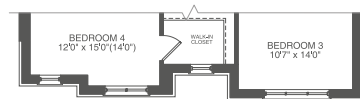
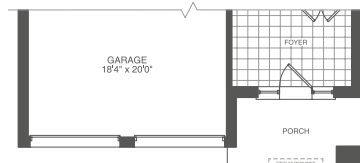
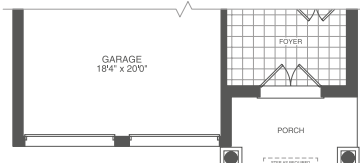
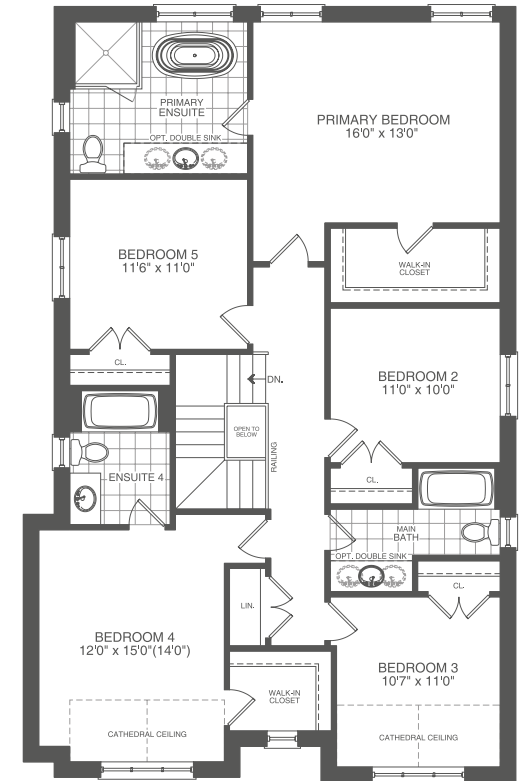
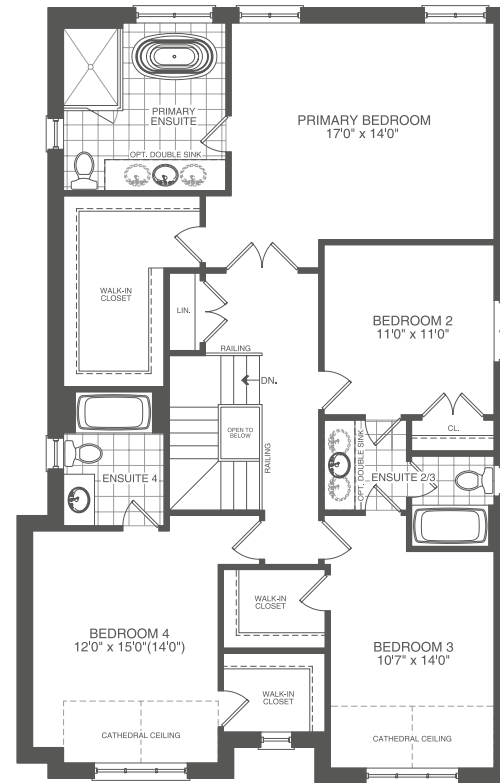
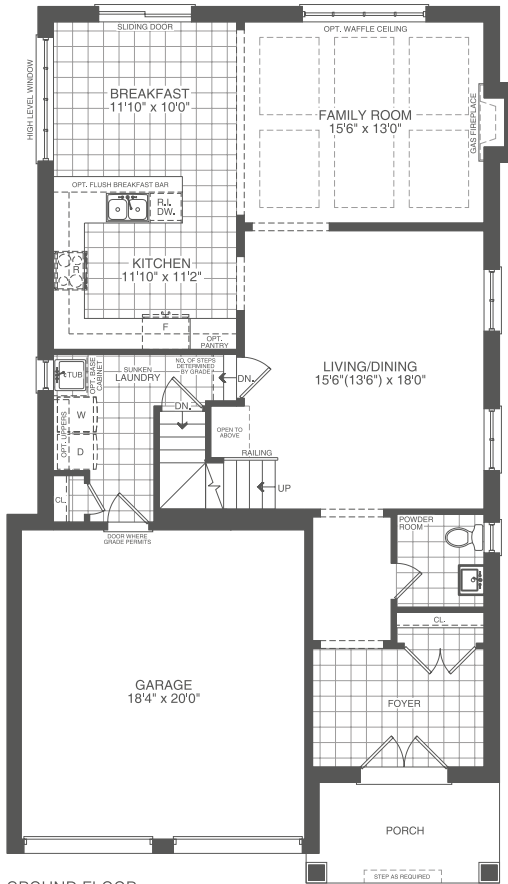
UNFINISHED BASEMENT  
ELEV. A/B/C  
2720/2720/2725 sf



FINISHED BASEMENT  
ELEV. A/B/C  
3340/3340/3345 sf







The floor plans, elevations, dimensions, specifications and architectural detailing shown are pre-construction plans only and may be changed or revised without notice including As may be necessitated by architectural controls and the construction process. All dimensions are approximate. Actual usable floor space may vary from the stated area. House may be reversed. Steps may vary at any exterior entrance. Illustrations are artist's concept only. Exterior railings to be installed only as required by grade notwithstanding any illustrations or plans. E & O.E. NOV 14 2023



Elevation C 2,845 sq.ft.



Elevation A 2,845 sq.ft.



Elevation A with Optional Loft 3,440 sq.ft.

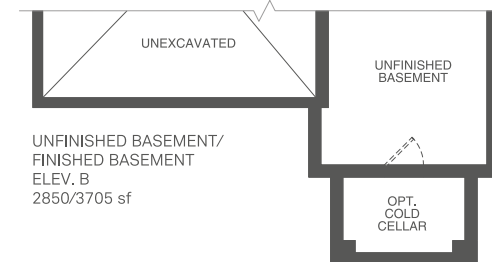
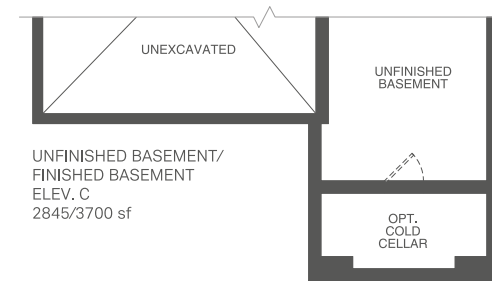
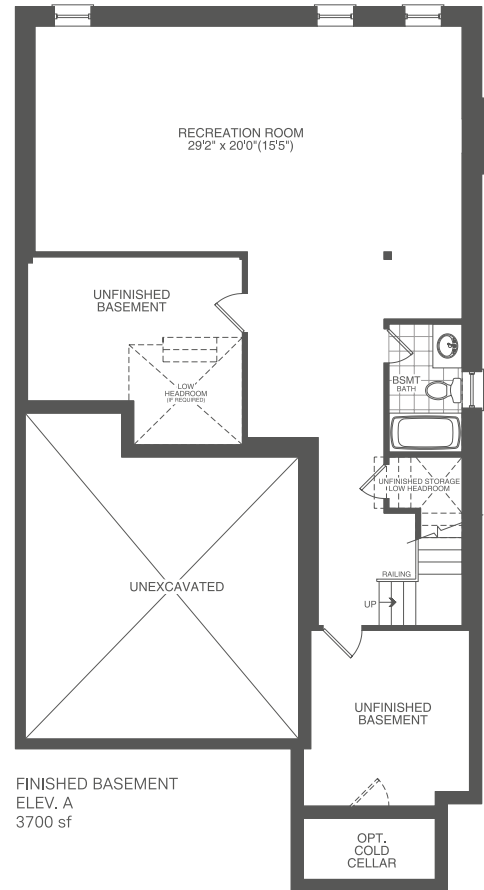
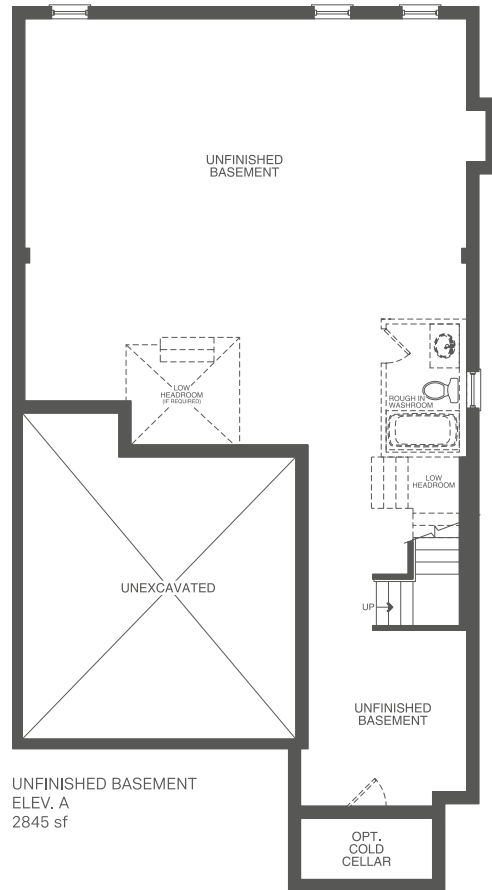


Elevation B 2,850 sq.ft.

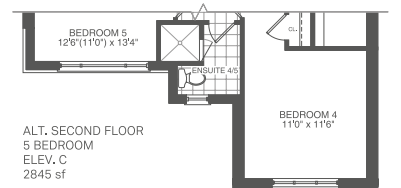
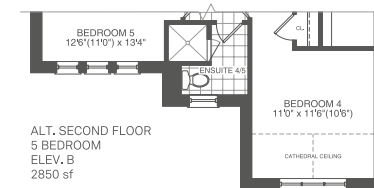
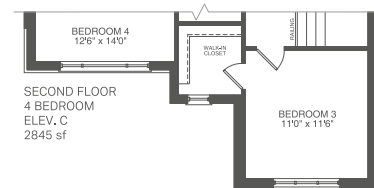
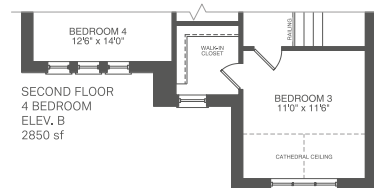
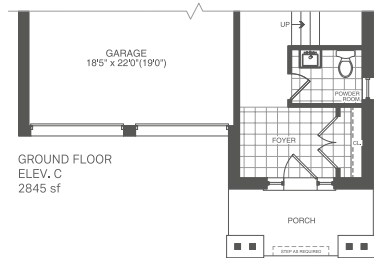
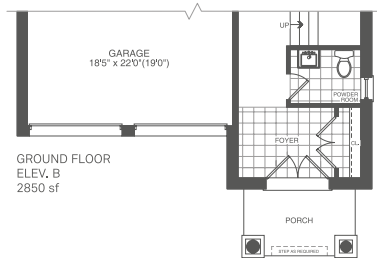
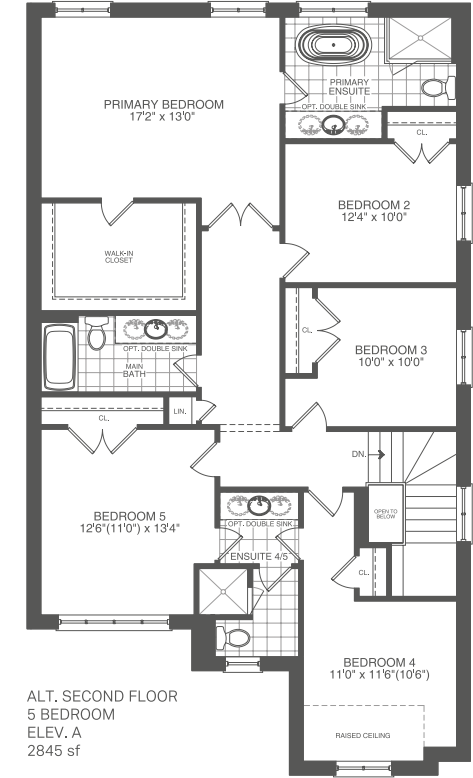
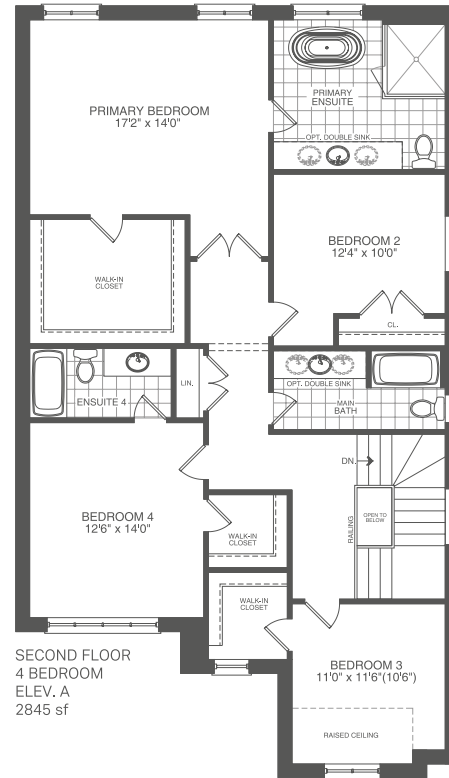
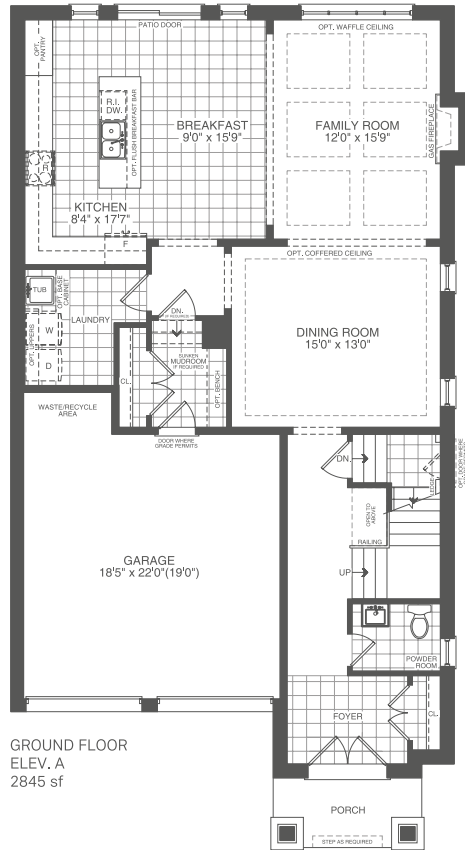


Elevation B with Optional Loft 3,445 sq.ft.

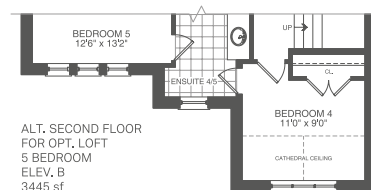
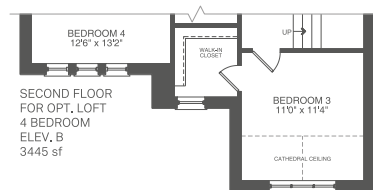
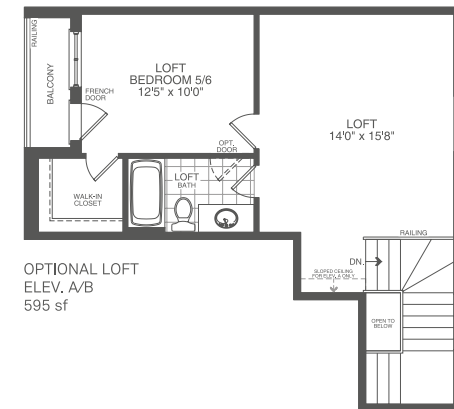
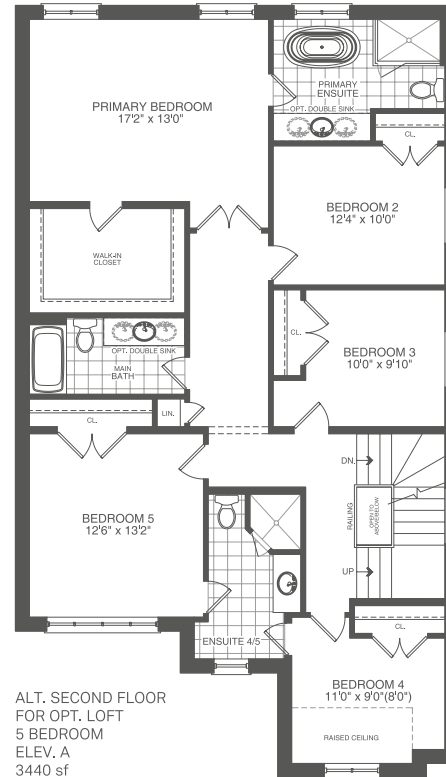
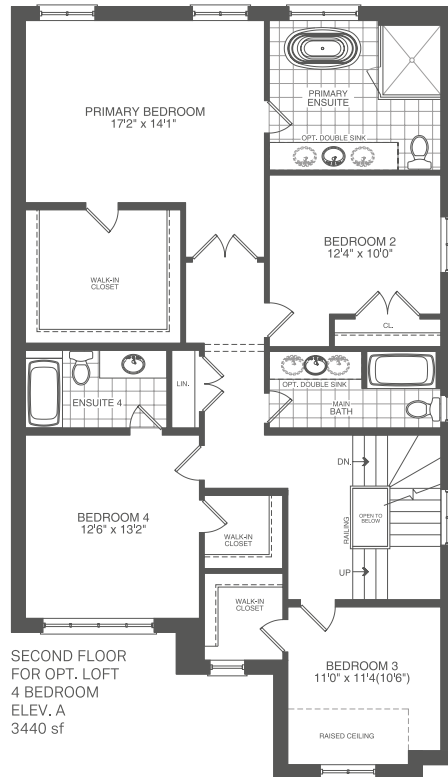








The floor plans, elevations, dimensions, specifications and architectural detailing shown are pre-construction plans only and may be changed or revised without notice including As may be necessitated by architectural controls and the construction process. All dimensions are approximate. Actual usable floor space may vary from the stated area. House may be reversed. Steps may vary at any exterior entrance. Illustrations are artist's concept only. Exterior railings to be installed only as required by grade notwithstanding any illustrations or plans. E & O.E. NOV 14 2023





Elevation A 2,905 sq.ft.



Elevation B 2,920 sq.ft.

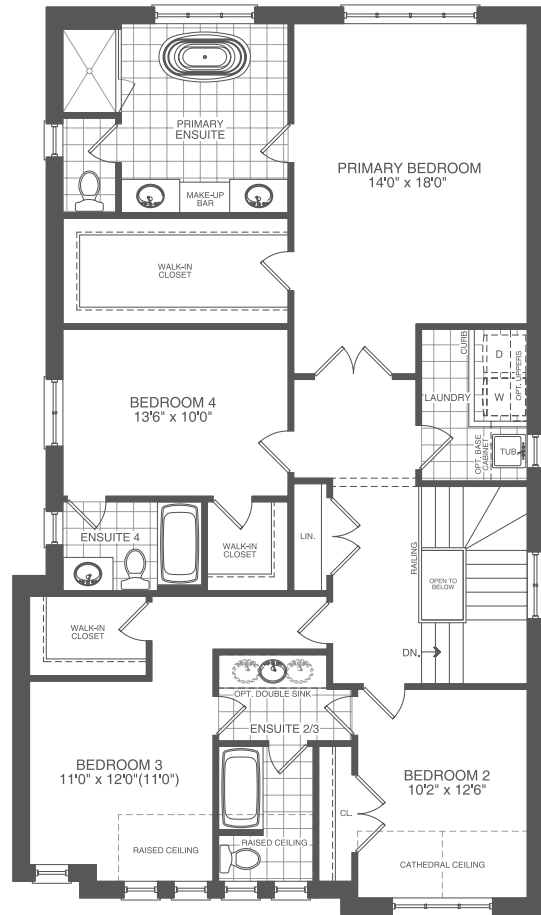


Elevation C 2,905 sq.ft.

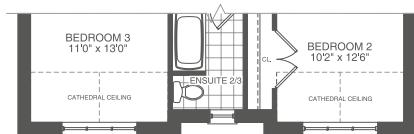




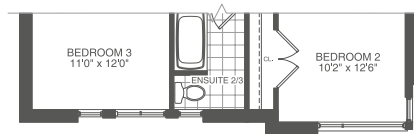




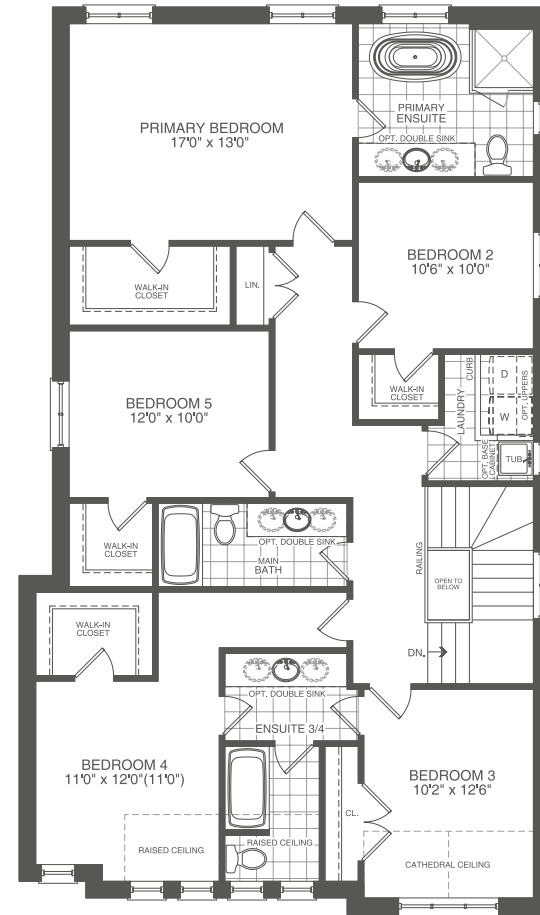
SECOND FLOOR  
4 BEDROOM  
ELEV. A  
2905 sf



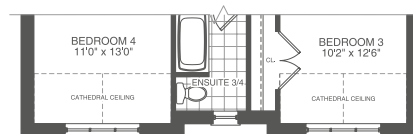
SECOND FLOOR  
4 BEDROOM  
ELEV. B  
2920 sf



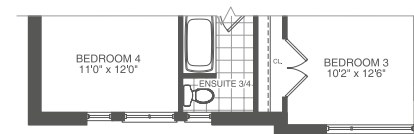
SECOND FLOOR  
4 BEDROOM  
ELEV. C  
2905 sf



ALT. SECOND FLOOR  
5 BEDROOM  
ELEV. A  
2905 sf



ALT. SECOND FLOOR  
5 BEDROOM  
ELEV. B  
2905 sf



ALT. SECOND FLOOR  
5 BEDROOM  
ELEV. C  
2905 sf



The floor plans, elevations, dimensions, specifications and architectural detailing shown are pre-construction plans only and may be changed or revised without notice including As may be necessitated by architectural controls and the construction process. All dimensions are approximate. Actual usable floor space may vary from the stated area. House may be reversed. Steps may vary at any exterior entrance. Illustrations are artist's concept only. Exterior railings to be installed only as required by grade notwithstanding any illustrations or plans. E & O.E. NOV 14 2023



Elevation C 3,240 sq.ft.



Elevation A 3,240 sq.ft.



Elevation A with Optional Loft 3,845 sq.ft.



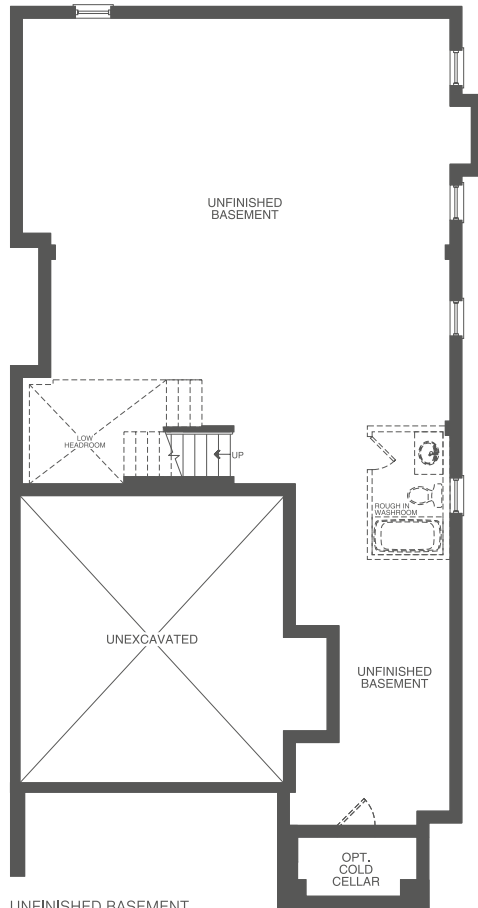
Elevation B 3,235 sq.ft.



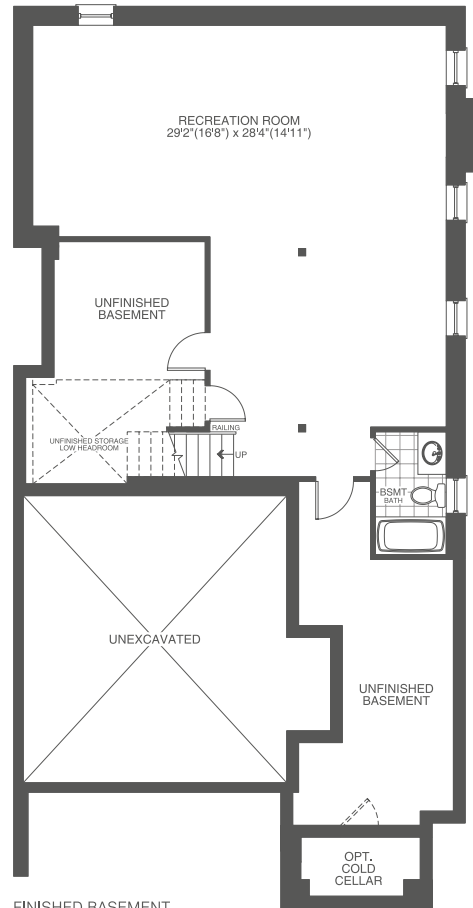
Elevation B with Optional Loft 3,840 sq.ft.



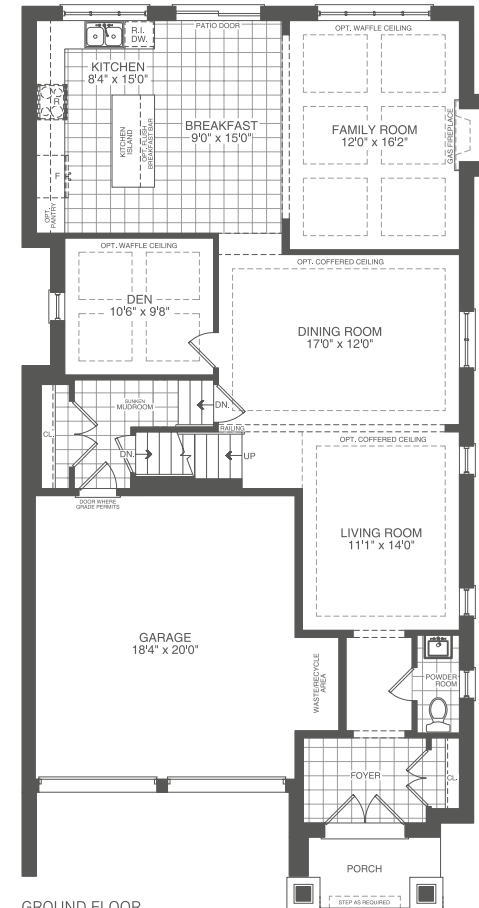




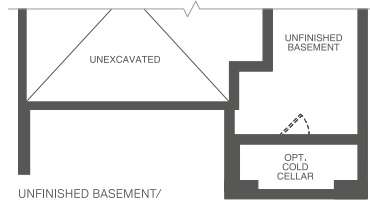
UNFINISHED BASEMENT  
ELEV. A  
3240 sf



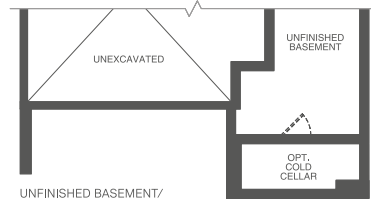
FINISHED BASEMENT  
ELEV. A  
4120 sf



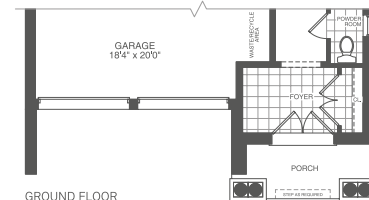
GROUND FLOOR  
ELEV. A  
3240 sf



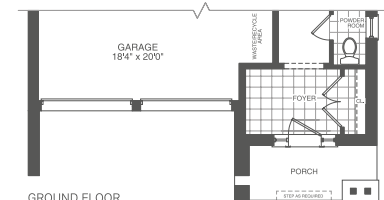
UNFINISHED BASEMENT/  
FINISHED BASEMENT  
ELEV. B  
3235/4115 sf



UNFINISHED BASEMENT/  
FINISHED BASEMENT  
ELEV. C  
3240/4120 sf



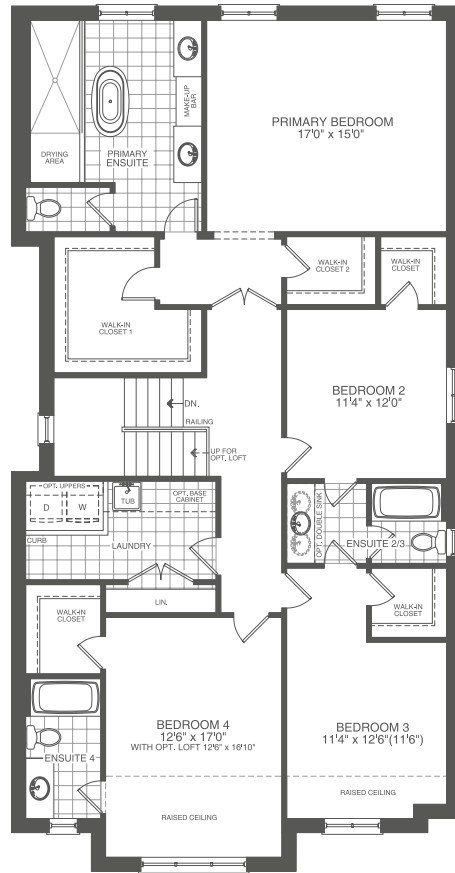
GROUND FLOOR  
ELEV. B  
3235 sf



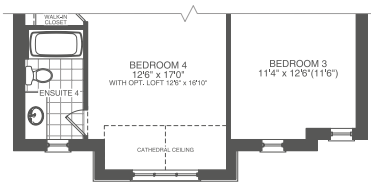
GROUND FLOOR  
ELEV. C  
3240 sf



The floor plans, elevations, dimensions, specifications and architectural detailing shown are pre-construction plans only and may be changed or revised without notice including As may be necessitated by architectural controls and the construction process. All dimensions are approximate. Actual usable floor space may vary from the stated area. House may be reversed. Steps may vary at any exterior entrance. Illustrations are artist's concept only. Exterior railings to be installed only as required by grade notwithstanding any illustrations or plans. E & O.E. NOV 14 2023



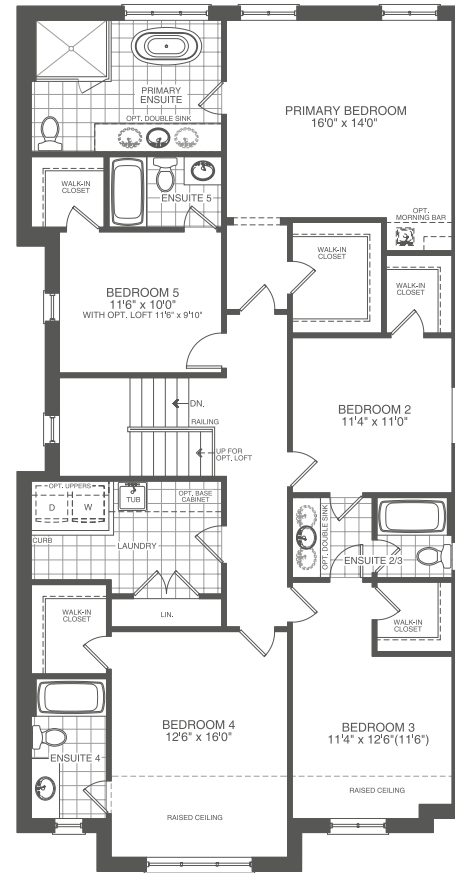
SECOND FLOOR  
4 BEDROOM  
ELEV. A  
3240 sf



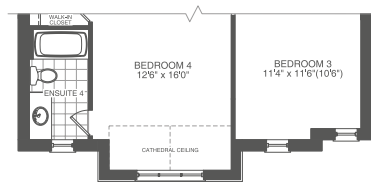
SECOND FLOOR  
4 BEDROOM  
ELEV. B  
3235 sf



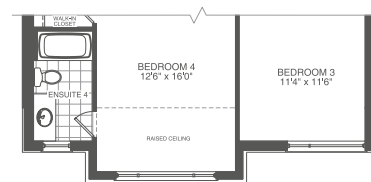
SECOND FLOOR  
4 BEDROOM  
ELEV. C  
3240 sf



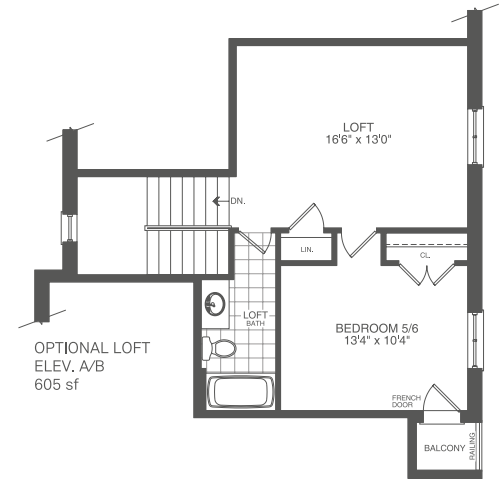
ALT. SECOND FLOOR  
5 BEDROOM  
ELEV. A  
3240 sf



ALT. SECOND FLOOR  
5 BEDROOM  
ELEV. B  
3235 sf



ALT. SECOND FLOOR  
5 BEDROOM  
ELEV. C  
3240 sf



OPTIONAL LOFT  
ELEV. A/B  
605 sf





Elevation A 3,220 sq.ft.



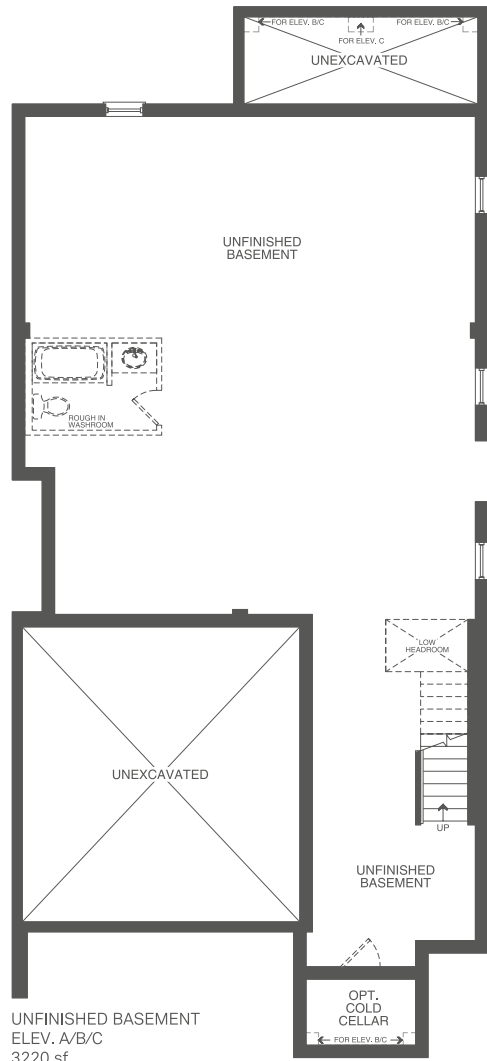
Elevation B 3,220 sq.ft.



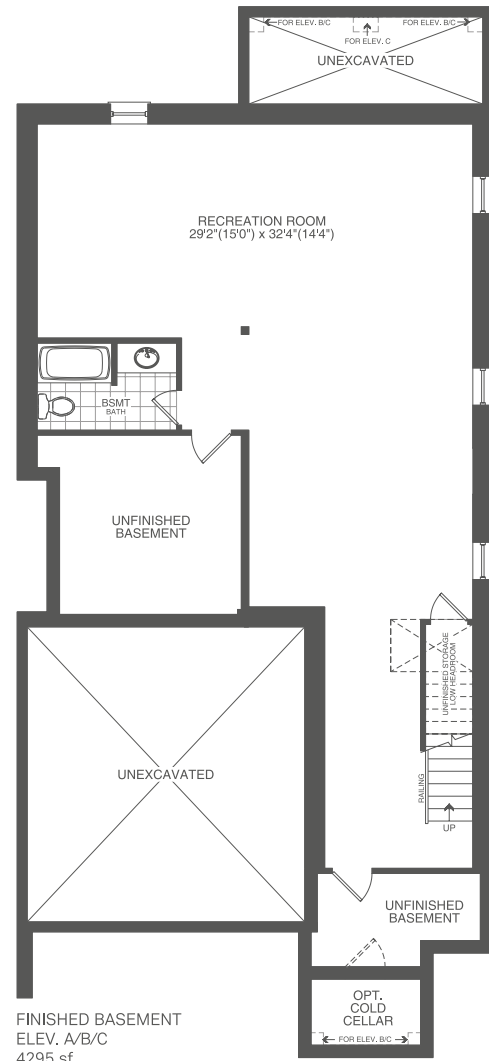
Elevation C 3,220 sq.ft.



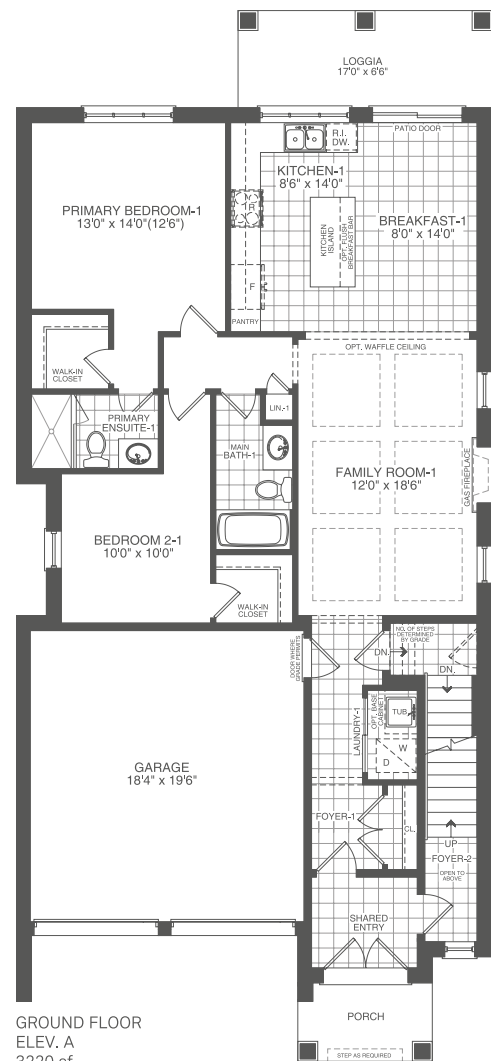




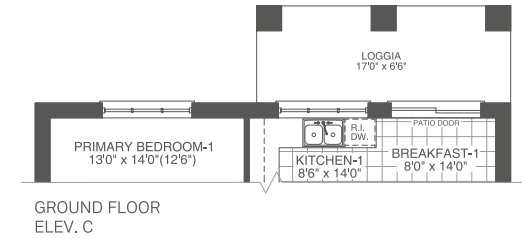
UNFINISHED BASEMENT  
ELEV. A/B/C  
3220 sf



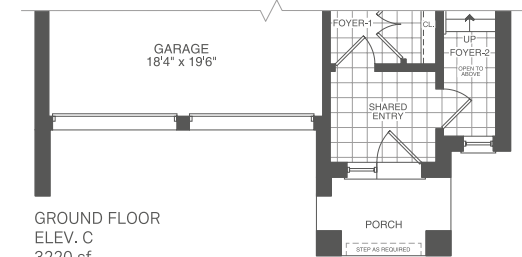
FINISHED BASEMENT  
ELEV. A/B/C  
4295 sf



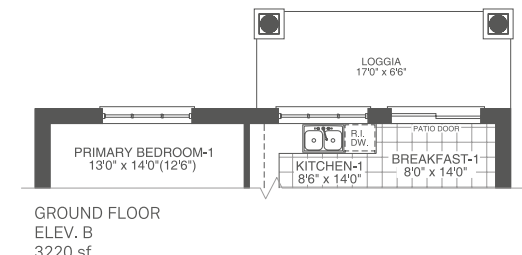
GROUND FLOOR  
ELEV. A  
3220 sf



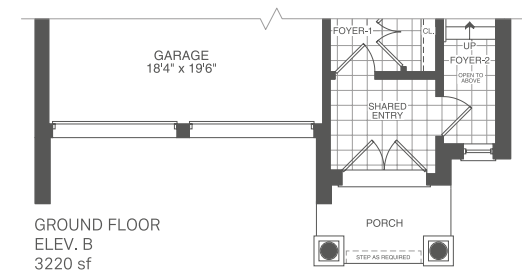
GROUND FLOOR  
ELEV. C



GROUND FLOOR  
ELEV. C  
3220 sf

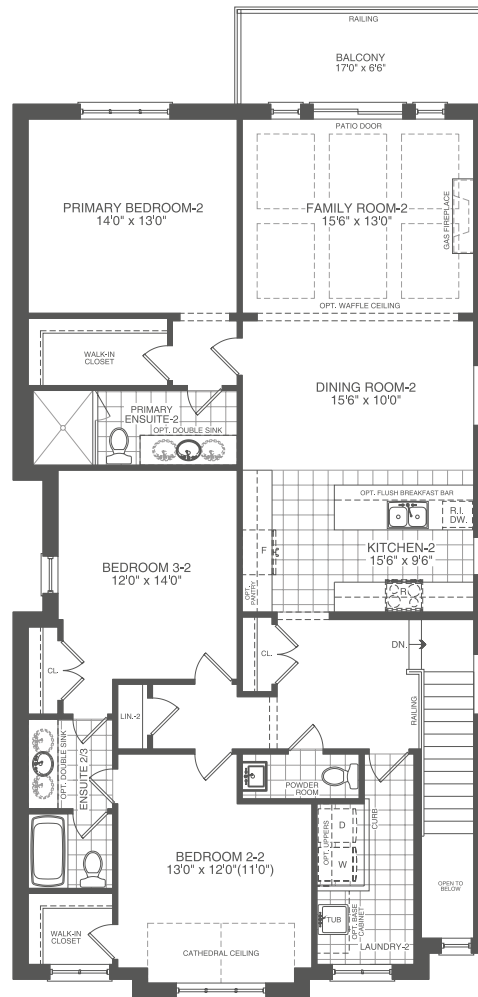


GROUND FLOOR  
ELEV. B  
3220 sf

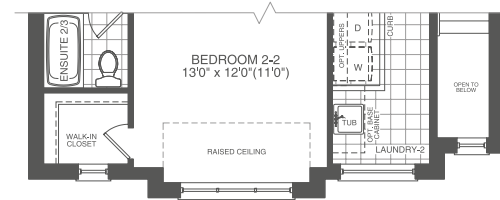


GROUND FLOOR  
ELEV. B  
3220 sf

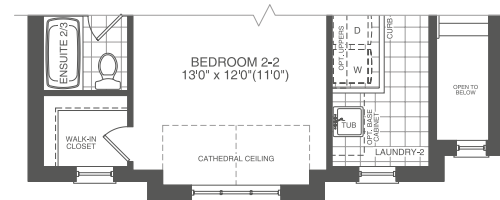




SECOND FLOOR  
ELEV. A  
3220 sf



SECOND FLOOR  
ELEV. C  
3220 sf



SECOND FLOOR  
ELEV. B  
3220 sf





Elevation A 1,825 sq.ft.



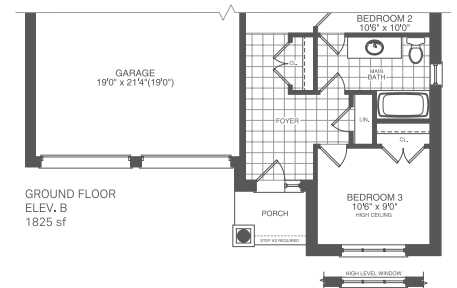
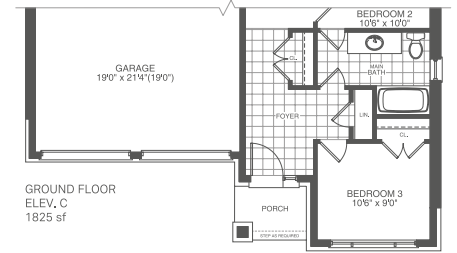
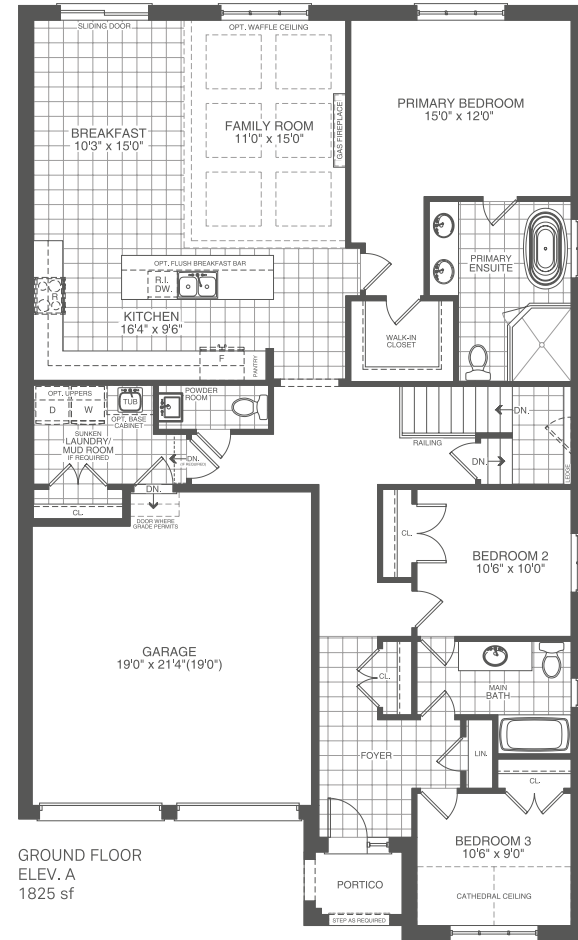
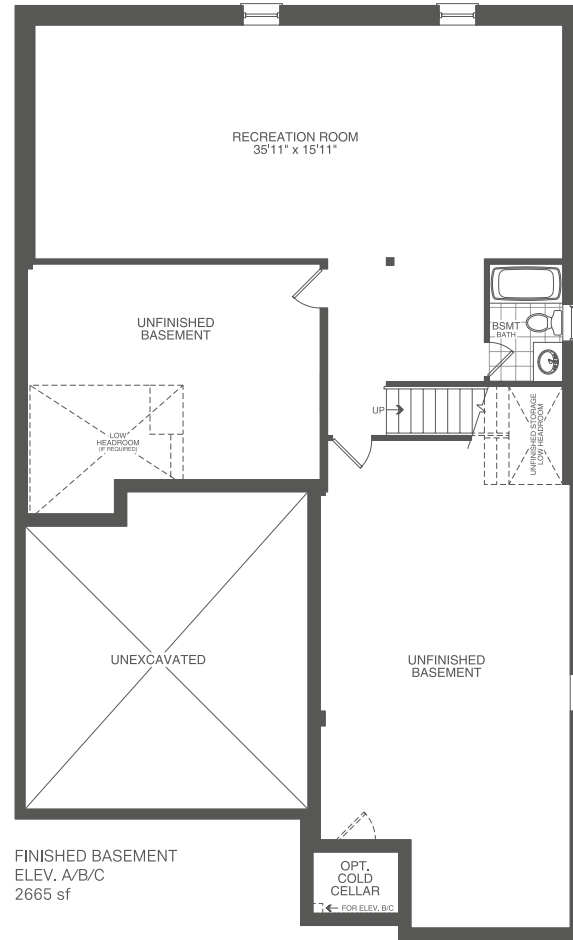
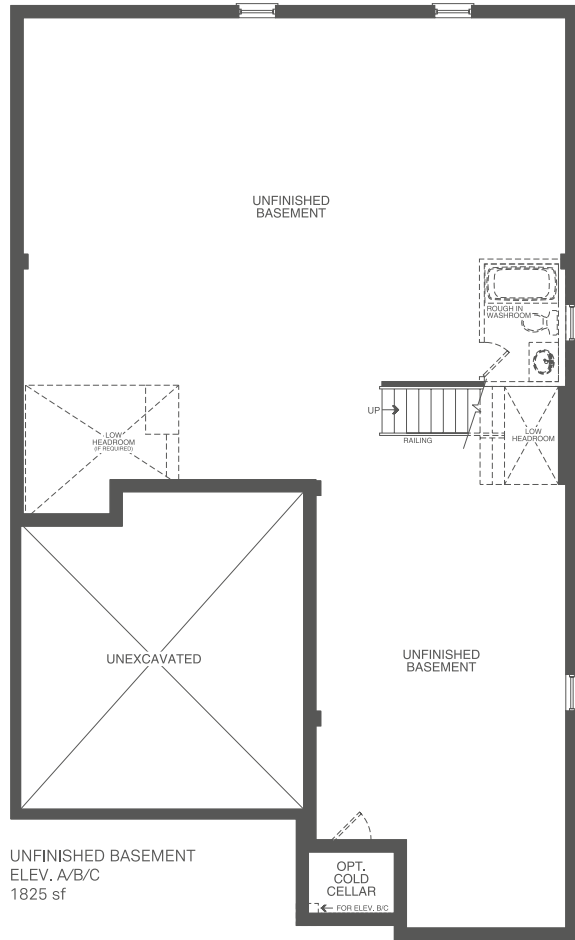
Elevation B 1,825 sq.ft.



Elevation C 1,825 sq.ft.









Elevation A 3,170 sq.ft.

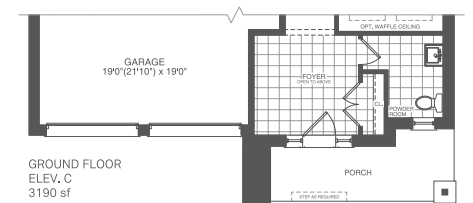
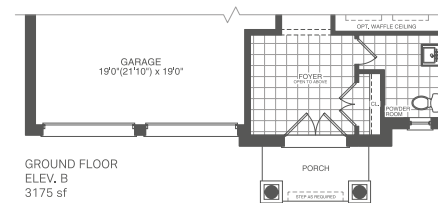
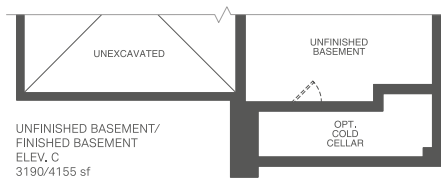
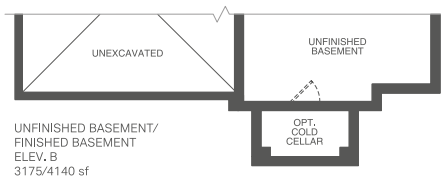
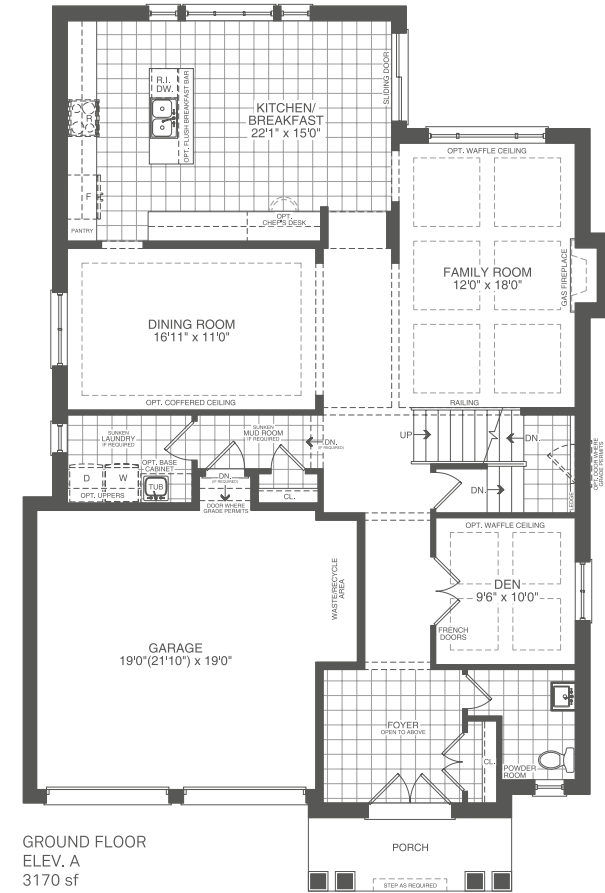
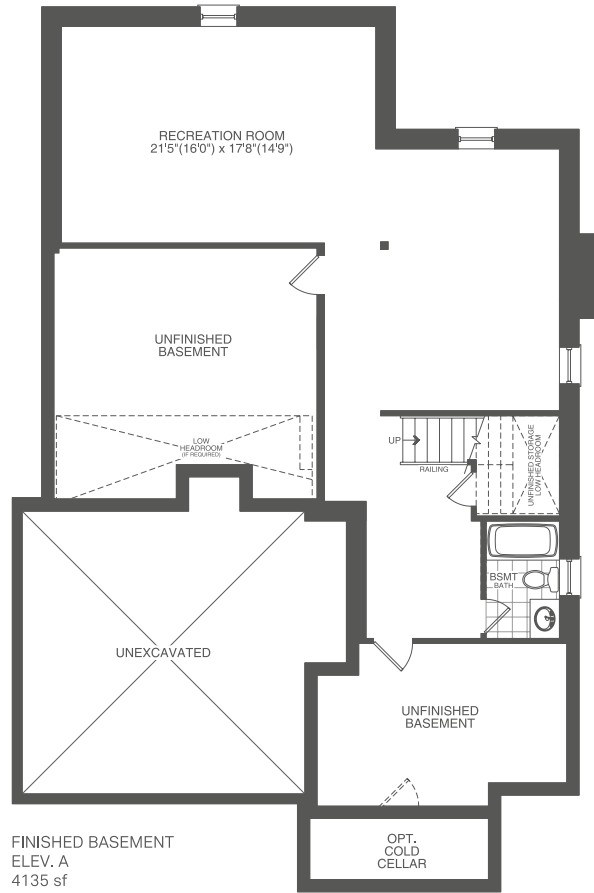
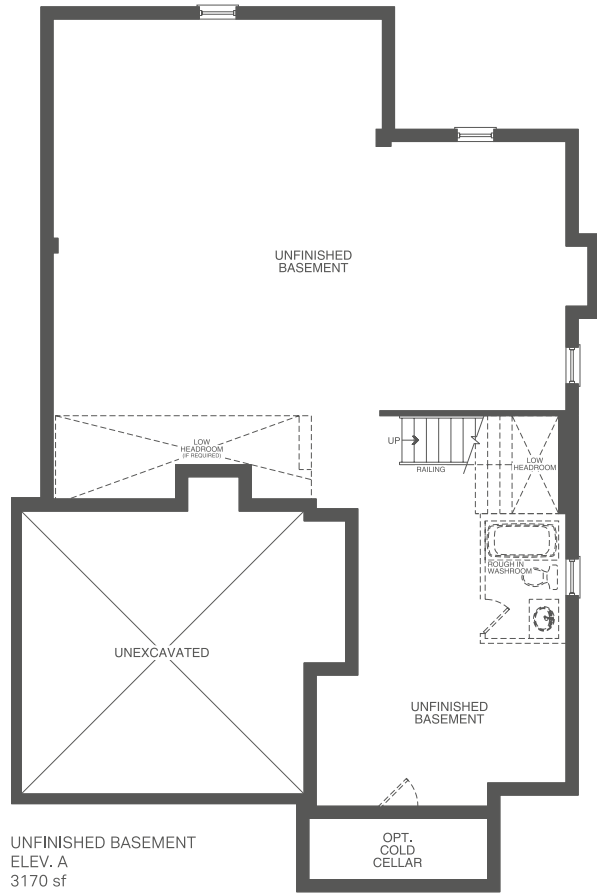


Elevation B 3,175 sq.ft.



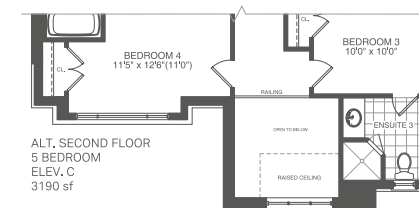
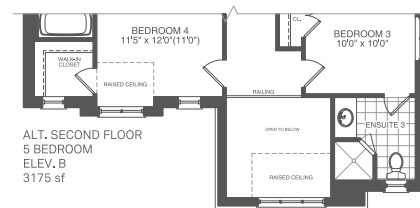
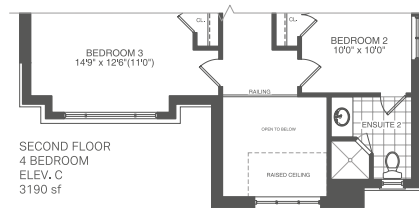
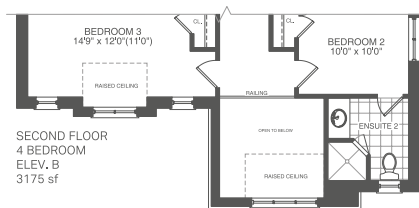
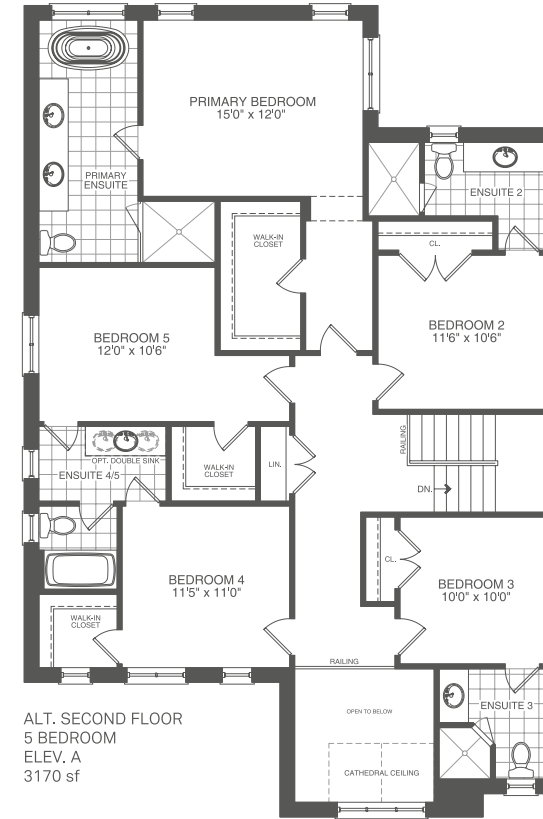
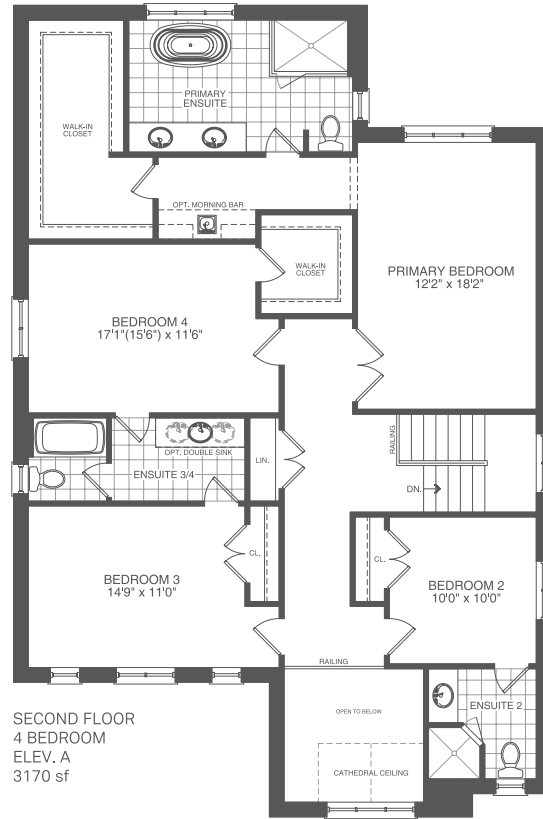
Elevation C 3,190 sq.ft.





The floor plans, elevations, dimensions, specifications and architectural detailing shown are pre-construction plans only and may be changed or revised without notice including As may be necessitated by architectural controls and the construction process. All dimensions are approximate. Actual usable floor space may vary from the stated area. House may be reversed. Steps may vary at any exterior entrance. Illustrations are artist's concept only. Exterior railings to be installed only as required by grade notwithstanding any illustrations or plans. E & O.E. NOV 17 2023







Elevation A 3,505 sq.ft.

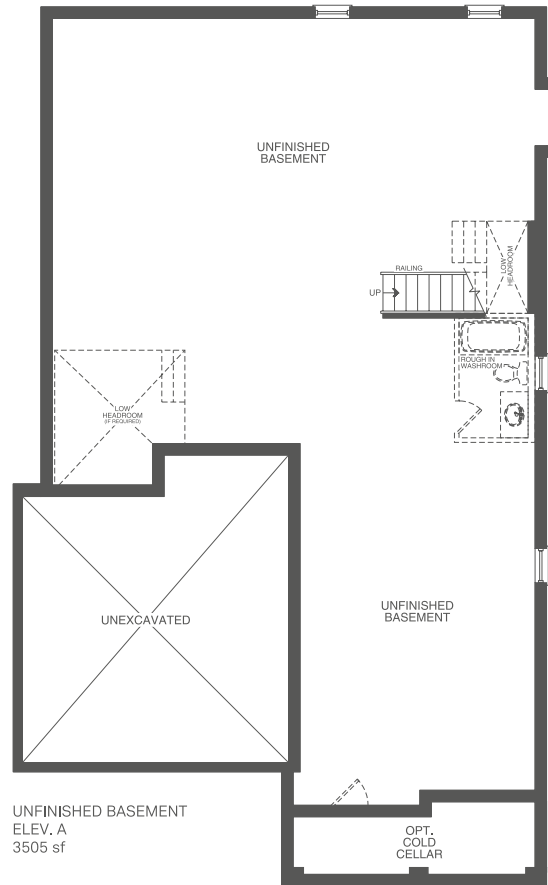


Elevation B 3,490 sq.ft.

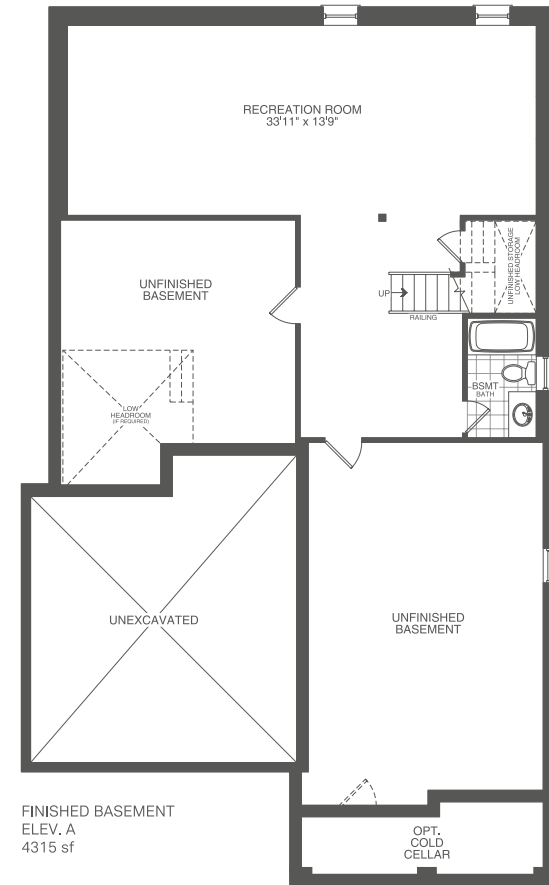


Elevation C 3,505 sq.ft.

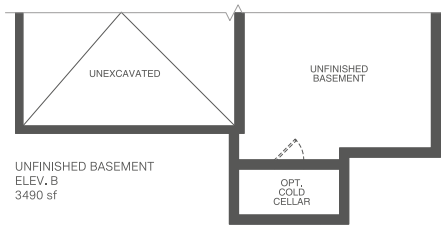




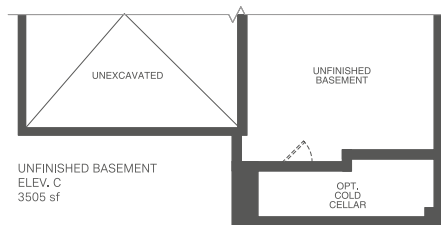
UNFINISHED BASEMENT  
ELEV. A  
3505 sf



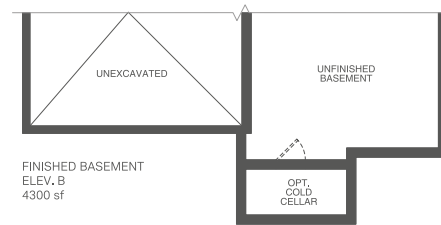
FINISHED BASEMENT  
ELEV. A  
4315 sf



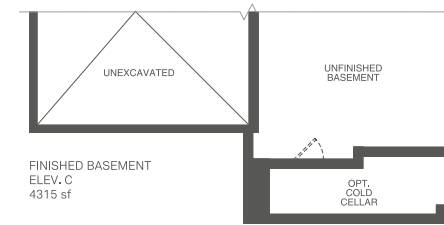
UNFINISHED BASEMENT  
ELEV. B  
3490 sf



UNFINISHED BASEMENT  
ELEV. C  
3505 sf



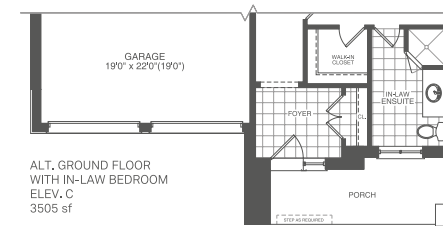
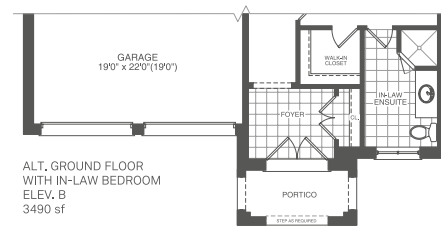
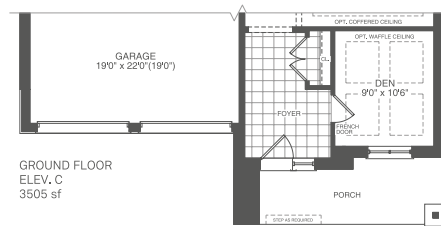
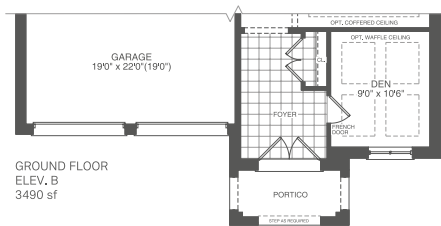
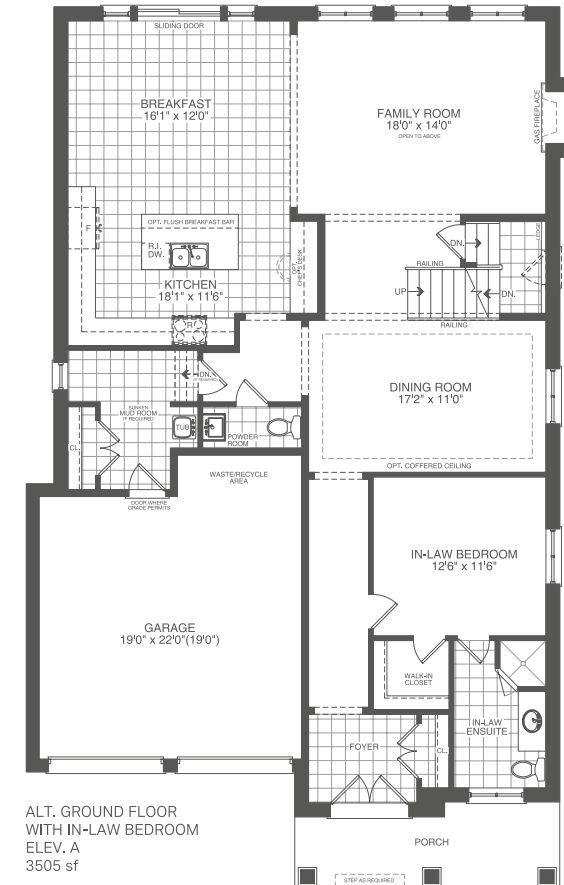
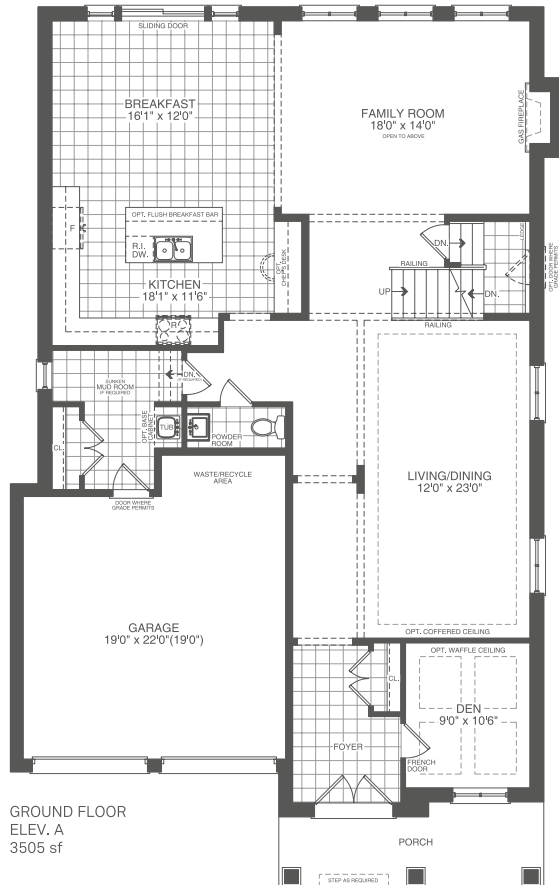
FINISHED BASEMENT  
ELEV. B  
4300 sf



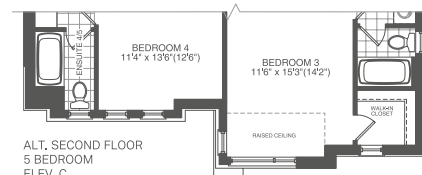
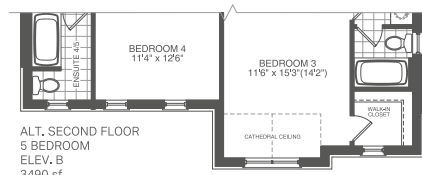
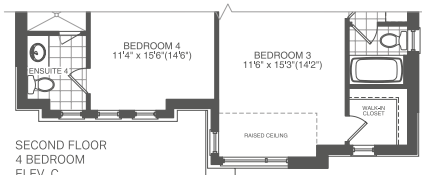
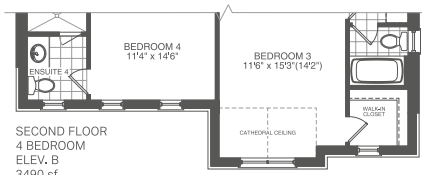
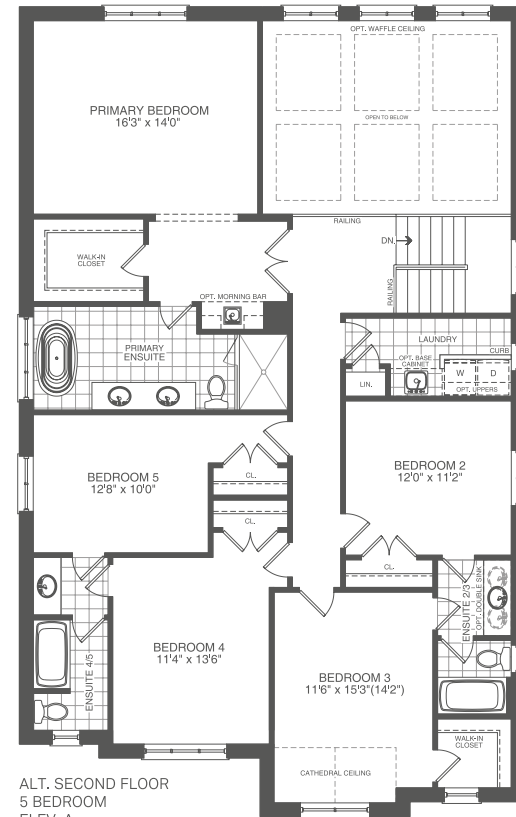
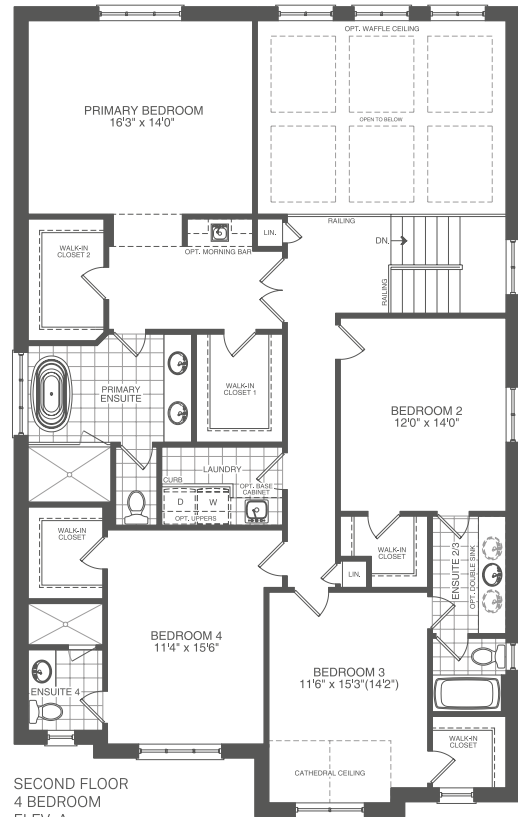
FINISHED BASEMENT  
ELEV. C  
4315 sf







The floor plans, elevations, dimensions, specifications and architectural detailing shown are pre-construction plans only and may be changed or revised without notice including As may be necessitated by architectural controls and the construction process. All dimensions are approximate. Actual usable floor space may vary from the stated area. House may be reversed. Steps may vary at any exterior entrance. Illustrations are artist's concept only. Exterior railings to be installed only as required by grade notwithstanding any illustrations or plans. E & O.E. NOV 17 2023



The floor plans, elevations, dimensions, specifications and architectural detailing shown are pre-construction plans only and may be changed or revised without notice including As may be necessitated by architectural controls and the construction process. All dimensions are approximate. Actual usable floor space may vary from the stated area. House may be reversed. Steps may vary at any exterior entrance. Illustrations are artist's concept only. Exterior railings to be installed only as required by grade notwithstanding any illustrations or plans. E & O.E. NOV 17 2023



Elevation C 3,940 sq.ft.



Elevation A 3,935 sq.ft.



Elevation A with Optional Loft 4,675 sq.ft.



Elevation B 3,940 sq.ft.



Elevation B with Optional Loft 4,680 sq.ft.







Elevation A 1,995 sq.ft.



Elevation B 1,995 sq.ft.



Elevation C 2,010 sq.ft.









Elevation A 3,720 sq.ft.



Elevation B 3,720 sq.ft.

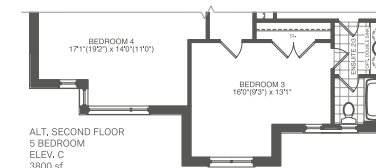
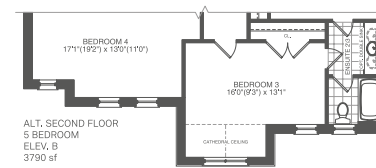
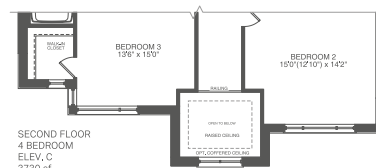
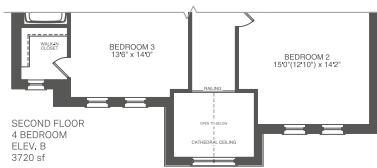
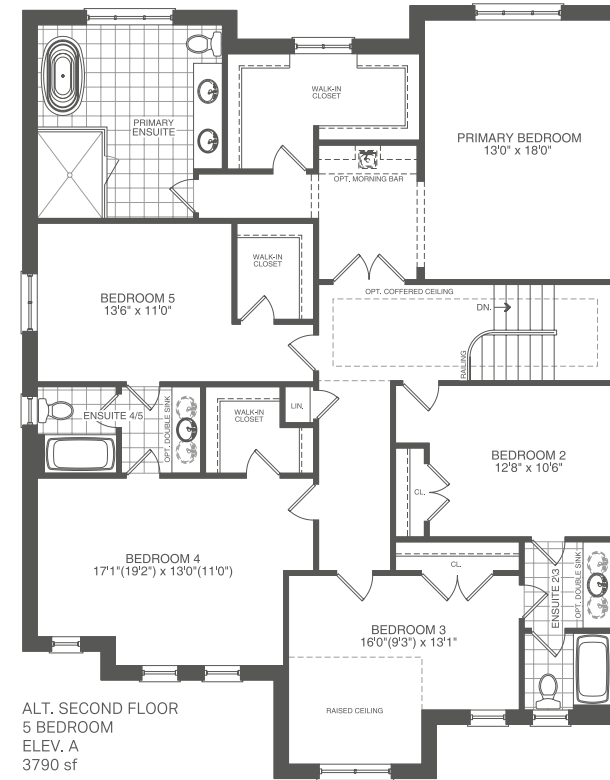
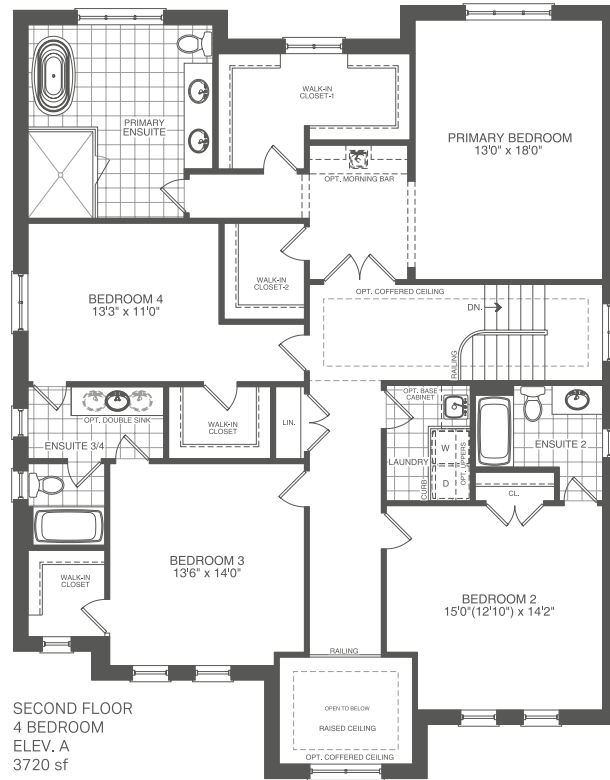


Elevation C 3,730 sq.









The floor plans, elevations, dimensions, specifications and architectural detailing shown are pre-construction plans only and may be changed or revised without notice including As may be necessitated by architectural controls and the construction process. All dimensions are approximate. Actual usable floor space may vary from the stated area. House may be reversed. Steps may vary at any exterior entrance. Illustrations are artist's concept only. Exterior railings to be installed only as required by grade notwithstanding any illustrations or plans. E & O.E. NOV 17 2023



Elevation A 3,940 sq.ft.



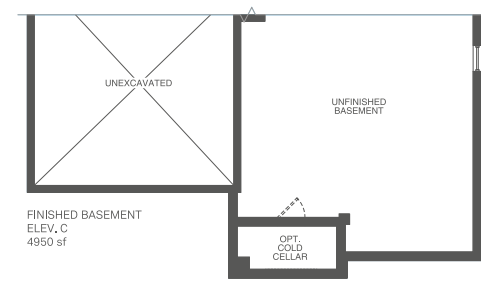
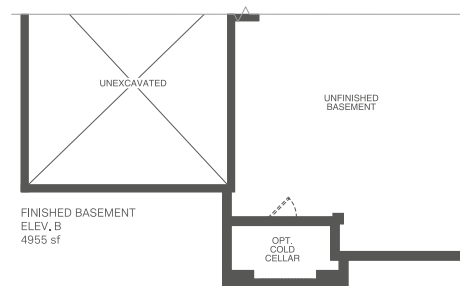
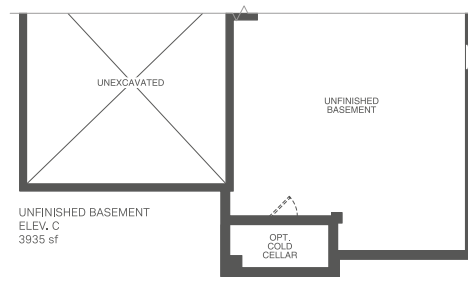
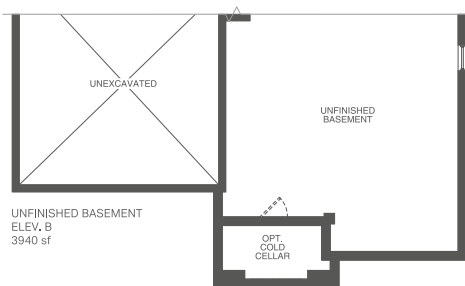
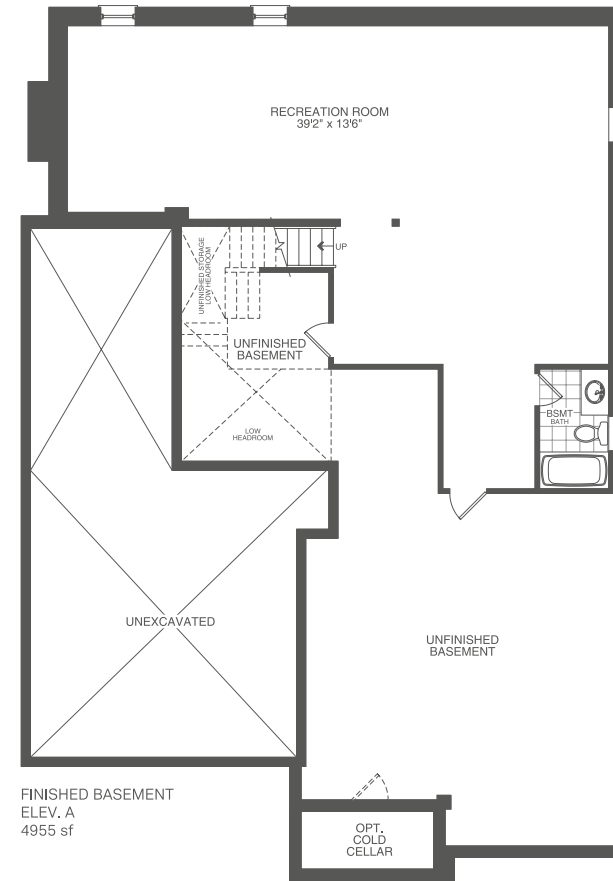
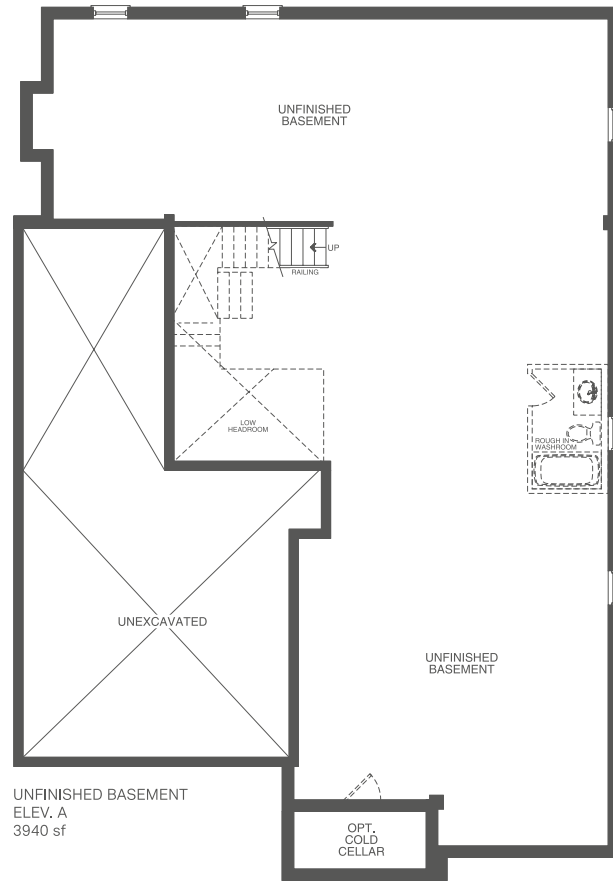
Elevation B 3,940 sq.ft.



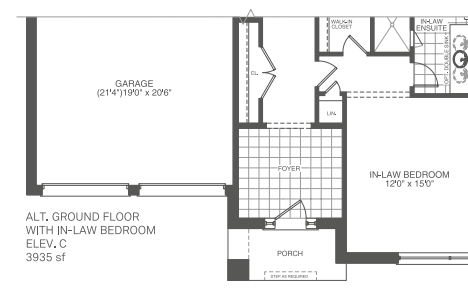
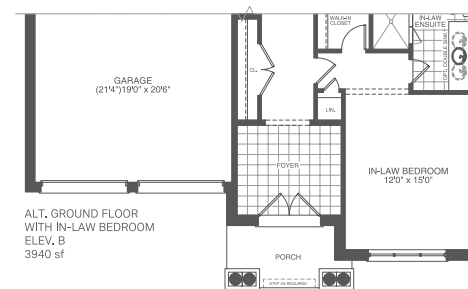
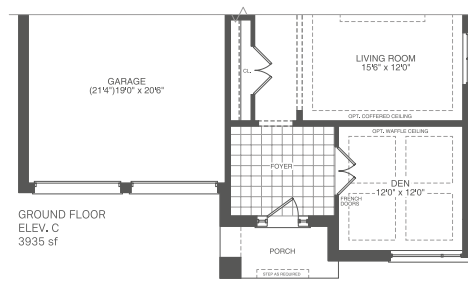
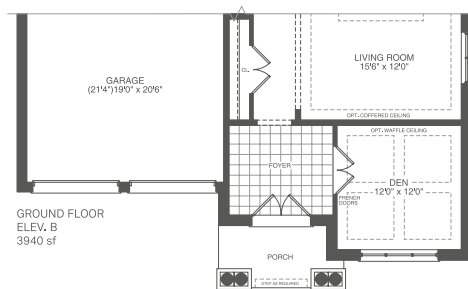
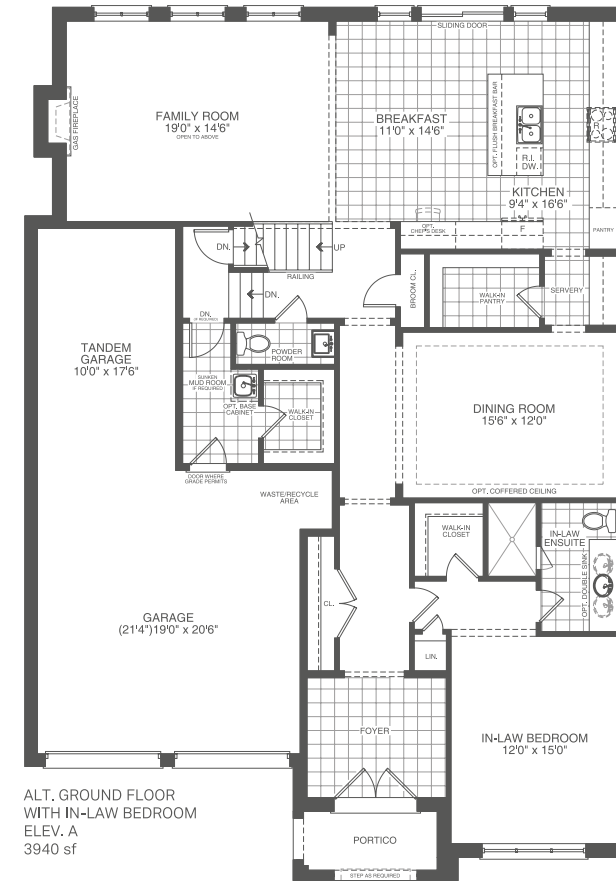
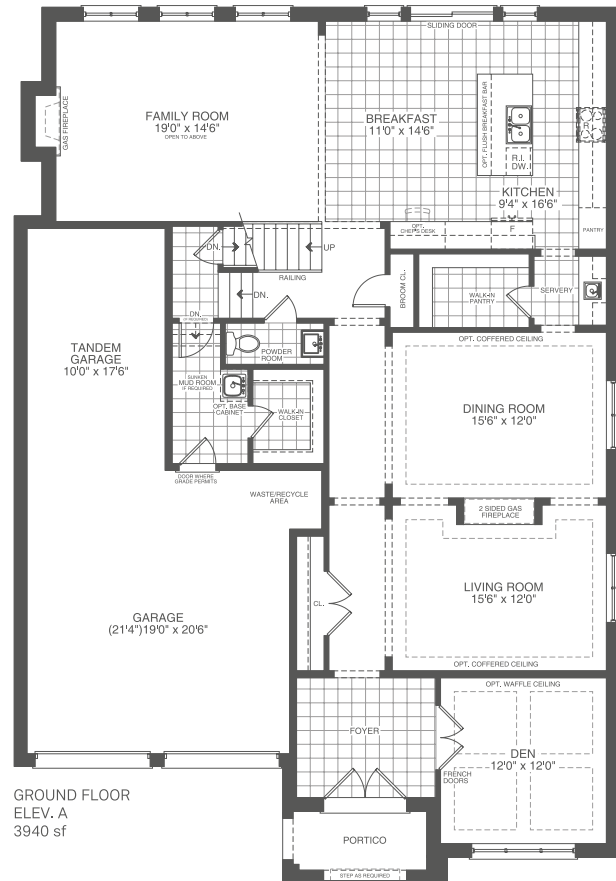
Elevation C 3,935 sq.ft.







The floor plans, elevations, dimensions, specifications and architectural detailing shown are pre-construction plans only and may be changed or revised without notice including As may be necessitated by architectural controls and the construction process. All dimensions are approximate. Actual usable floor space may vary from the stated area. House may be reversed. Steps may vary at any exterior entrance. Illustrations are artist's concept only. Exterior railings to be installed only as required by grade notwithstanding any illustrations or plans. E & O.E. NOV 17 2023



The floor plans, elevations, dimensions, specifications and architectural detailing shown are pre-construction plans only and may be changed or revised without notice including As may be necessitated by architectural controls and the construction process. All dimensions are approximate. Actual usable floor space may vary from the stated area. House may be reversed. Steps may vary at any exterior entrance. Illustrations are artist's concept only. Exterior railings to be installed only as required by grade notwithstanding any illustrations or plans. E & O.E. NOV 17 2023







Elevation C 4,400 sq.ft.



Elevation A 4,390 sq.ft.



Elevation A with Optional Loft 5,165 sq.ft.



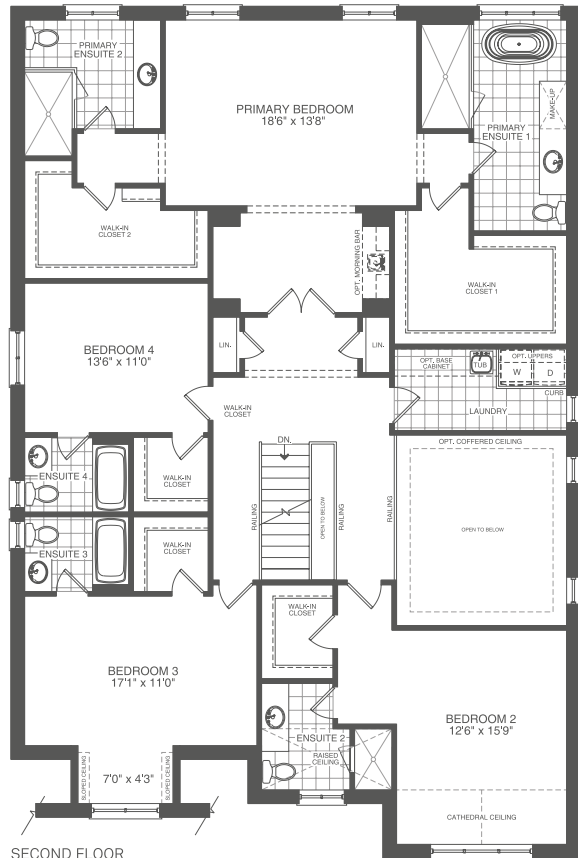
Elevation B 4,355 sq.ft.



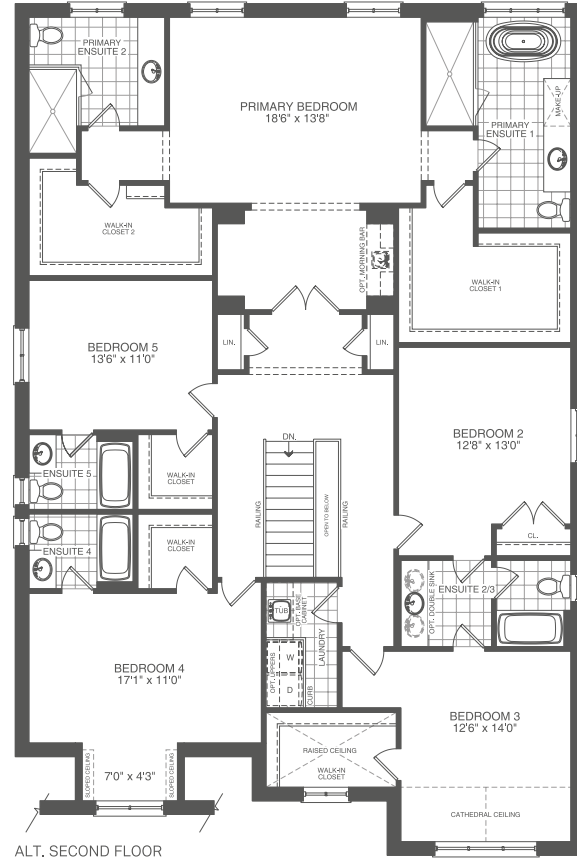
Elevation B with Optional Loft 5,130 sq.ft.



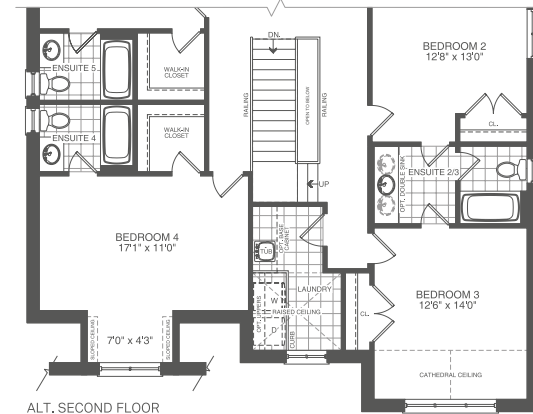




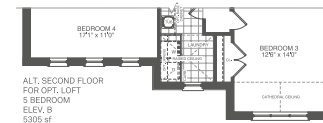
SECOND FLOOR  
4 BEDROOM  
ELEV. A  
4390 sf



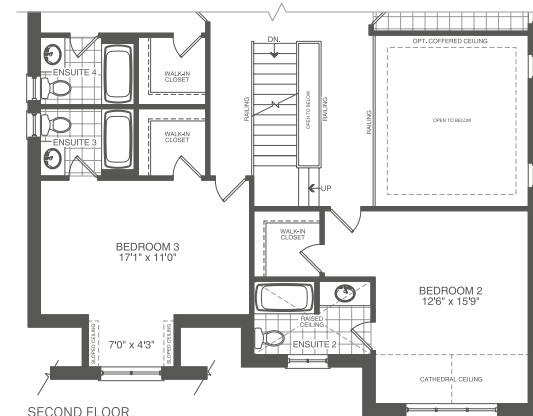
ALT. SECOND FLOOR  
5 BEDROOM  
ELEV. A  
4565 sf



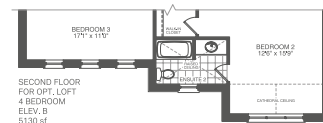
ALT. SECOND FLOOR  
FOR OPT. LOFT  
5 BEDROOM  
ELEV. A  
5340 sf



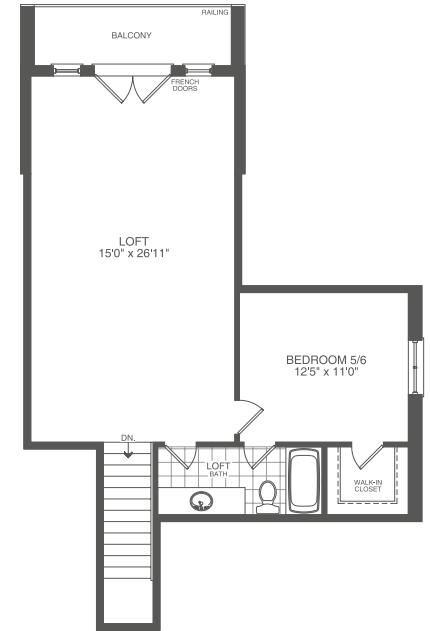
ALT. SECOND FLOOR  
FOR OPT. LOFT  
5 BEDROOM  
ELEV. B  
5305 sf



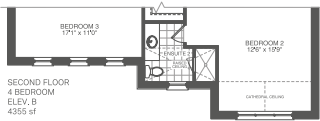
SECOND FLOOR  
FOR OPT. LOFT  
4 BEDROOM  
ELEV. A  
5165 sf



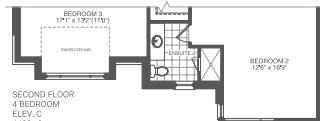
SECOND FLOOR  
FOR OPT. LOFT  
4 BEDROOM  
ELEV. B  
5130 sf



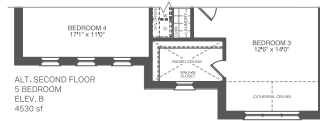
OPTIONAL LOFT  
ELEV. A/B  
775 sf



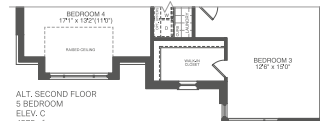
SECOND FLOOR  
4 BEDROOM  
ELEV. B  
4355 sf



SECOND FLOOR  
4 BEDROOM  
ELEV. C  
4400 sf



ALT. SECOND FLOOR  
5 BEDROOM  
ELEV. B  
4530 sf



ALT. SECOND FLOOR  
5 BEDROOM  
ELEV. C  
4575 sf



The floor plans, elevations, dimensions, specifications and architectural detailing shown are pre-construction plans only and may be changed or revised without notice including As may be necessitated by architectural controls and the construction process. All dimensions are approximate. Actual usable floor space may vary from the stated area. House may be reversed. Steps may vary at any exterior entrance. Illustrations are artist's concept only. Exterior railings to be installed only as required by grade notwithstanding any illustrations or plans. E & O.E. NOV 17 2023